



ALSTDI

ALS Therapy Development Institute

ANNUAL REPORT 2010



Letter from the CEO

Last year, my family, like many other families across the world, was impacted by a potentially life threatening medical condition. Due to amazing and rapid advances in cardiovascular research and drug development, the crisis has passed and the condition can be treated chronically. We were obviously blessed to have access to these existing life saving medications. These medications continue to reduce the risk of further incidence of cardiovascular events allowing my family to return to a normal semblance of everyday life. This is the situation we need in ALS.

We need to get to a point where there is an opportunity to recover and to live. That is what I am committed to doing and what all of us at ALS TDI believe is possible.

This past year began with our team publishing a paper in Nature Genetics, describing a previously unknown biological process related to disease onset and progression. In that work, we identified a monoclonal antibody which effectively altered that process in such a way that the disease slowed down in the preclinical model in ways we had not previously seen. Always with an eye on clinical translation, we looked toward our human gene expression database to confirm whether or not that pathway was, in fact, present similarly in people living with the disease. The data was undeniable, with nearly 60% of samples from PALS showing a clear up-regulation of the co-stimulatory pathway; leading us to believe that for the first time, we had found sufficient evidence to move a potential therapeutic into the clinic. Only there can we determine its potential and perhaps take an important step toward fulfilling our mission of developing treatments for ALS patients today.

I have come to take particular notice of the number of young people diagnosed with this disease. This last year, a remarkable group of these young people organized the Young Faces of ALS® campaign to benefit ALS TDI. This campaign leveraged both social media as well as our partnership with Major League Baseball®, and spread much needed awareness of the fact that young people everywhere are being diagnosed with ALS. I think as an organization inspired by a young person- Stephen was 29 when he was diagnosed- we believe it is important to recognize the fact that ALS is indiscriminate to age. We are honored to be able to work with them on this campaign and on their behalf in the lab to end ALS.

In this year's annual report, we have chosen to highlight a couple of the technologies that we have been able to either acquire or develop in order to solve the ALS drug development crisis. We believe that there is always an opportunity to shorten the time-frame and reduce the cost of drug development, and we are excited to share a few of the examples of that focus with you. In addition, I have been amazed at the amount of support and feedback that we are able to achieve by engaging with the ALS community via social media. One thing I am not amazed by is the passion of this community. It is an honor to be able to lead this Institute on your behalf every day.

Research is a passive word. In essence, it means to look at something purposefully. The hard part has always been how to take what we know about this disease and use it to create medicine which may help people living with ALS. That is the process of drug development. This is the mission of the ALS Therapy Development Institute and we are grateful to have your support.

Sincerely,

A handwritten signature in black ink that reads "Steve Perrin". The signature is fluid and cursive, with a small dot at the end of the last name.

Steve Perrin, Ph.D.
CEO & CHIEF SCIENTIFIC OFFICER



2010 MILESTONES



GeneTitan

One of the first installed at a biotech in Cambridge, this key automation device will monitor gene expression and genome-wide SNP genotyping. Named “Corey” after the Corey’s Crusade Family Fund.



Talks at SFN and ALS/MND

Five members of the ALS TDI Research & Development Team gave presentations at each of these meetings, a record for the Institute.



YFALS

The Young Faces of ALS Campaign drew attention to the lives of teenagers and young adults diagnosed with ALS.



Aestus Partnership

ALS TDI and Aestus Therapeutics collaborated to investigate potential treatments for ALS.



Department of Defense Grant

The DOD awarded ALS TDI \$1.6 million grant to study ALS and develop potential treatments.



Nature Genetics Publication

ALS TDI’s approach to comprehensive and patient-driven research culminated in the widely acclaimed publication of the discovery of ALS TDI 00846 in *Nature Genetics* this year. The Institute is in the process of partnering this molecule with a major pharmaceutical company.



MDA Grant

The MDA and Augie’s Quest continued its pledge of support for ALS TDI with an extension of its grant to include \$2.5 million for 2010.



Leadership Summit

The 6th Annual Summit featured Drs. Clive Svendsen, Gilmore O’Neil, Merit Cudkowicz, Fernando Vieira and Steve Perrin. Leadership Awards went to Steve Saling, Carla Zilbersmith, Tim LaFollette and Eric Valor.

→
*GeneTitan Plate
w/96 Genome
Arrays*

A new device known as a GeneTitan, innovated by the Affymetrix Corporation, was launched on the market during the fall of 2010. The first GeneTitan to be installed at a research facility was the one installed at ALS TDI.



←
*Each array
carries normal
expression of
30,000 genes
in SOD1 mouse*



←
*Side view of Individual
Gene Arrays on Plate*

Unique LIMS Experiment Identifier

Corey: Titan of Genes

“All illnesses have some heredity contribution. It’s been said that genetics loads the gun and environment pulls the trigger.”

FRANCIS COLLINS, M.D., PH.D., DIRECTOR, NATIONAL INSTITUTES OF HEALTH

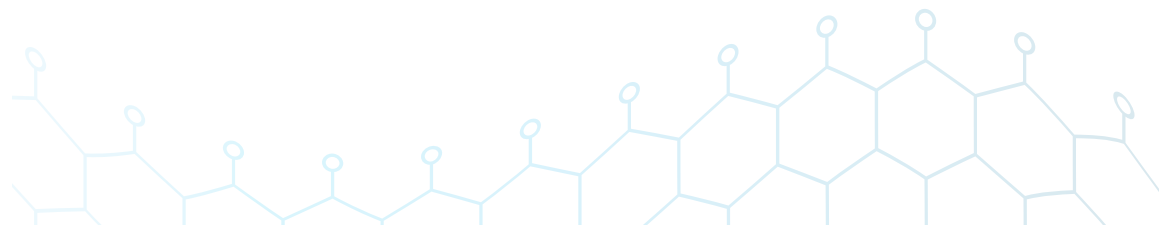


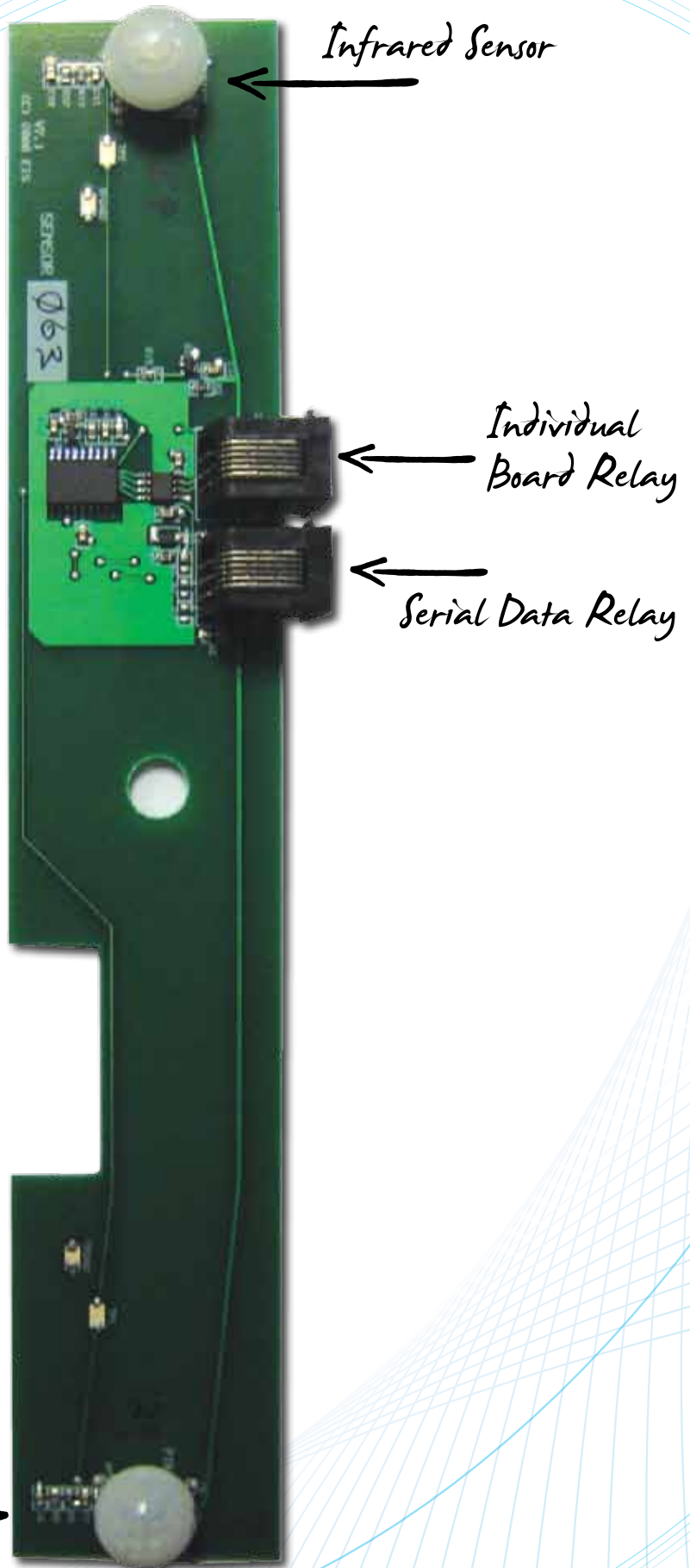
The search for an effective treatment for ALS begins by first seeking to find out what is different between a healthy person and a person with the disease. ALS TDI established its gene expression core in 2005 when it purchased a TaqMan® qPCR instrument, and hired a full-time professional scientist to operate that sensitive and state-of-the-art technology. That device allowed ALS TDI, for the first time, to view how gene expression changed overtime, at various segments of the human genome, by quantifying that expression for upwards of 3,000 genes (approximately 6,000 base pairs) at a given time. That work led the Institute’s research team to identify potential new genetic biomarkers of disease onset and progression, and played a crucial role in the genotyping work done by Scott, et. al. at ALS TDI in establishing the world-wide standard guidelines for the use of the SOD1 mouse model.

However, technology is always changing, and as Moore’s Law predicted, the art of gene expression was not immune. In fact, technological advances have made it possible (and financially practical) to view the entire human genome (30,000 genes) at a single time. A new device known as a GeneTitan, innovated by the Affymetrix Corporation, was

launched on the market during the fall of 2010. The purchase of such a powerful and important new tool in the battle against ALS was made possible by the direct fundraising efforts of ALS TDI board member Theodore Reich. The first in use device was named Corey, after his son who was diagnosed with ALS in 2007.

Corey the GeneTitan will allow ALS TDI to search for important changes in gene expression quicker and more broadly, while at the same time saving the Institute hundreds of thousands of dollars annually by no longer having to out-source the procurement of genome-wide knowledge on the samples it collects from its experiments and from a network of clinics nationwide. It will also be used to help characterize new and emerging models of neurodegeneration, such as the TDP-43 mouse model, that the Institute expects to provide guidelines for before the end of 2011.





Infrared Sensor

Board Sequence ID Number

Individual Board Relay

Serial Data Relay

Infrared Sensor

Brainstorming with Drs. Al Gill, Fernando G. Vieira and Harveen Dhillon at ALS TDI, a novel and custom-built infra-red heat sensor device was developed to provide continuous recording of the effect of a drug on an animal by tracking minute-by-minute the movements of the animal.

BTW: You're being followed.....

"You see but you do not observe."

SIR ARTHUR CONAN DOYLE

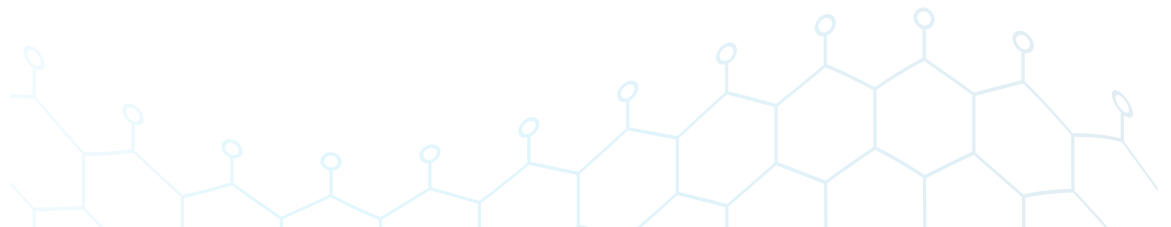
ALS is a heterogeneous and sensitive disease, where subtle, yet unknown differences between patients may result in some surviving years while others only months. Likewise, the animal model of the disease is a complex and aggressive one with a seemingly very short opportunity to determine effect. The Institute established the universal guidelines for the use of the SOD1 mouse model in 2008. Those guidelines offered the research community instructions on how to statistically determine whether or not their potential treatment was having an effect in the mouse model by sufficiently powering studies, separating litter mates, accounting for gender differences as well as inherent drifting in the number of copies of the SOD1 gene mutations present in each individual animal. The scale used to track progression of disease offered in that guideline was also designed to be as rigorous as possible; tracking both weight loss of the animal as well as determining the daily functional ability of the animals.

ALS in Will Reed's family caused him to research the disease, looking for the groups that had the best chance of finding a treatment in the near future. He found that ALS TDI was the group that was acting with total focus on treatment discovery, without the need for future monetary return that for-profit biotech companies have. He felt that this was the team that would make best use of any resources that he could give.

Impressed with the team's acumen for the process and professionally consistent approach to determining the efficacy of drugs, Reed began to think about ways for them to augment their efficacy experiments by using technology. He noted that the scoring of animals only happens once a day and that the current system, while sensitive, doesn't necessarily predict outcomes early on in the treatment, and therefore, may be potentially missing earlier and more subtle effects.

Brainstorming with Drs. Al Gill, Fernando G. Vieira and Harveen Dhillon at ALS TDI, a novel and custom-built infra-red heat sensor device was developed to provide continuous recording of the effect of a drug on an animal by tracking minute-by-minute the movements of the animal. The sensors are networked in a way that can be scaled-up to monitor large numbers of animals. The results of this initial experiment did in fact show that by tracking movement in this way, study directors at ALS TDI were able to view subtle changes in behavior earlier on in the disease, which would have otherwise been missed using the observational system alone. Simply put, this device and technology has added increased sensitivity to the studies conducted at ALS TDI today.

In Reed's view "donating time, money and organizing fundraising events are things we do for our families and ourselves, to take action in desperate circumstances".



SOCIAL MEDIA

ALSTDI
ALS Therapy Development Institute

The world's most advanced research laboratory dedicated to ALS

Home | What is ALS | Research | Get Involved | News | Forums | About Us | Community | Glossary | ALS FAQ | ALS Resources | Podcasts

Login | Create Account

what is ALS

Amotrophic lateral sclerosis (ALS), commonly known as Lou Gehrig's disease and outside the US as Motor Neuron Disease (MND) or Charcot's Disease, is a progressive neurodegenerative disease that attacks motor neurons in the brain (upper motor neurons) and spinal cord (lower motor neurons) and affects muscle function.

The motor neurons control the movement of various voluntary muscles including the diaphragm. Associated with the loss of the ability of motor neurons to function in ALS, the various muscles cells waste away (atrophy), resulting in increased muscle weakness. Ultimately, accumulated loss of motor neuron makes it impossible for voluntary control of normal muscle function.

Symptoms of ALS can include twitching and cramping of muscles (called fasciculation), motor control in hands and arms and difficulty breathing or swallowing.

significantly impaired sensory function. Eye and bladder muscles, along with...

ns, including laboratory tests, mutation of axon function.

on - the drug... month

for the... ment Institute.

donate NOW

ask a RESEARCHER

10 Year Anniversary
1999 - 2009

The National Amyotrophic Lateral Sclerosis (ALS) Registry

It's Here!
www.alsc.org/als
(800) 532-4036

facebook

Search

ALS TDI Like

Non-Profit Organization - Cambridge, Massachusetts

Wall ALS TDI - Top Posts

ALS TDI
After Facebook "Diary," Thomas Ohlson Opens Up About #ALS MTV:
<http://www.mtv.com/news/articles/1685459/diary-of-facebook-1-thomas-ohlson.jhtml>

After Facebook "Diary," Thomas Ohlson Opens Up About ALS - Music, Celebrity, Artist News | MTV
www.mtv.com

Thomas Ohlson opened up to MTV News about ALS after he was on "Diary of Facebook". "I've devoted ourselves to preserving life rather than our bank accounts, we would all be richer for it."

sharon an hour ago · Share

6 people like this.

ALS TDI
Thank you! Minnesota Twins and MLB for making 4ALS Awareness Day in Minneapolis memorable one for so many #ALS families:
<http://web4als.mlblogs.com/2011/06/15/1111422/>

Minnesota Twins Organization Heroes to Local PALS + 4ALS Awareness
web4als.mlblogs.com

The only practice I did on the way in to the ballpark today," proudly stated Joe and Erik Brown, when asked if their father, Michael, had rehearsed Lou Gehrig's famous "lastest man on the face of the earth" speech before reading it during the pre-game ceremony at Target Field in Minneapolis this

Yesterday at 9:24am · Share

9 people like this.

ALS TDI
Got a question about #ALS and research into an effective treatment? Ask us during this month's webinar on June 16 at 7PM (EDT): <http://als.net/Webinars/Default.aspx>

Monthly Webinar: Introduction to ALS and ALS Research - June 16 @ 7PM

Wall

Info

Friend Activity

Photos

Events

Video

Links

About

ALS TDI is the world's leader in research aimed at the discovery and develo...

More

facebook

Search

ALS TDI - Photos Like

Non-Profit Organization - Cambridge, Massachusetts

ALS TDI's Photos

See All Photos - Videos

May 2011 - Pick from YOUR Lab
29 photos

Wall Photos
2 photos

ALS TDI 2010 Milestones and 2011 Goals
2 photos

ALS TDI Holiday Cheer
4 photos

Profile Pictures
3 photos

Photos and Videos of ALS TDI

See All Photos - Videos

YOUR VOTE COUNTS

HELP

twitter

Home Profile Messages Who To Follow

smfar member
Sunday is Father's day & Lou Gehrig's b-day. honor fatherhood by donating 2 yr favorite #ALS charity. www.als.net @alstdi
#endate
9 hours ago
Retweet

ALSTDI ALS TDI
Thanks for the follow. @Annpri
37 minutes ago

ALSTDI ALS TDI
After Facebook "Diary," Thomas Ohlson Opens Up About #ALS MTV... <http://fb.me/XyEA8uF6>
1 hour ago

ALSTDI ALS TDI
Thank you! Minnesota Twins and MLB for making 4ALS Awareness Day in Minneapolis memorable one for so many #ALS... <http://fb.me/Mr98mXIT>

Tri-State Trek
@TriStateTrek view full profile
UT: 42.249624, -71.655595

3 days, 270 miles from Boston to NY to fund the research efforts of the @ALSTDI & help find an Effective Treatment for ALS.
<http://www.TriStateTrek.com>

1,920 Tweets 457 Following 441 Followers 31 Label

Follow

Recent Tweets

Social Media's Role as Research Driver

"How dare you? How can you squander even one more day not taking advantage of the greatest shifts of our generation? How dare you settle for less when the world has made it so easy for you to be remarkable?"

SETH GODIN

The world is big and small at the same time. Since its inception, the ALS Therapy Development Institute has sought to engage all ALS patients, families, caregivers and other stakeholders in its mission. As such, we have led the way in communicating with, meeting with and bringing people together to learn more about this disease. Having begun shortly after the advent of the world-wide-web and internet, ALS TDI created the first ALS social media tool, the ALS Forum, in 2000. It became a beacon of hope; encouraging the sharing of ideas, and unbiased and frank discussion. At the same time, knowing that the internet was not yet used widely, the Institute organized the first major "patient conference calls" (2001) using new teleconferencing abilities to bring together those that were unfamiliar or unable to connect to the web. That program morphed into the launch of the Institute's webcasts (2006), monthly webinar program (2007), and podcasts (2010). The Institute has maintained a popular Cause page on Facebook, a Twitter feed and networking group on LinkedIn.

.....as Fundraising Tool: *Tri-State Trek*

Our relationships on social media span from simple engagements on research to burgeoning sub-populations, to advocacy, online documentaries, sub-social and caregiver communities, and importantly, fundraising events and programs. Over the last year, for example, a coordinated, multi-platform campaign has led directly to new families becoming involved in ALS TDI's Tri-State Trek, a 270-mile bicycle ride from Boston to New York held each July.

.....as Awareness Generator: *The Young Faces of ALS Campaign™*

It's no secret that social media has played an important role in helping to bring together people with shared interests and common causes. It's also no secret that young people are the leading users of social media, and they are relying on it more each day for their primary source of news and means of communication. In 2010, ALS TDI partnered with a group of young people living with ALS today to leverage social media in order to raise awareness of this disease among their peers, and educate the public that ALS strikes teenagers and young adults as well. The Young Faces of ALS (YFALS) Campaign was the outcome, and in its first month on Facebook, acquired several thousand supporters! The group then worked with ALS TDI and its partners at Major League Baseball™ to attempt to visit every ball park during the 2010 season as part of the league-wide initiative 4♦ALS Awareness campaign. Keeping a schedule, uploading pictures, videos and commentary directly to Facebook proved a successful strategy, and the campaign drew much needed attention to this often ignored sub-population of ALS patients. The campaign made plans to quickly translate its momentum into funding for ALS research in 2011 with a major, national fundraising effort driven primarily through social media.



Facebook- 8868 on the cause page, 812 "like" ALS TDI



Twitter- 746 followers



LinkedIn- 126 connections



Tri-State Trek- 163 "like" the Tri-State Trek



YFALS- 2742 "like" YFALS

America's #1 Rated Non-Profit ALS Research Organization

"This 'exceptional' designation differentiates ALS Therapy Development Institute from its peers and demonstrates to the public it is worthy of their trust."

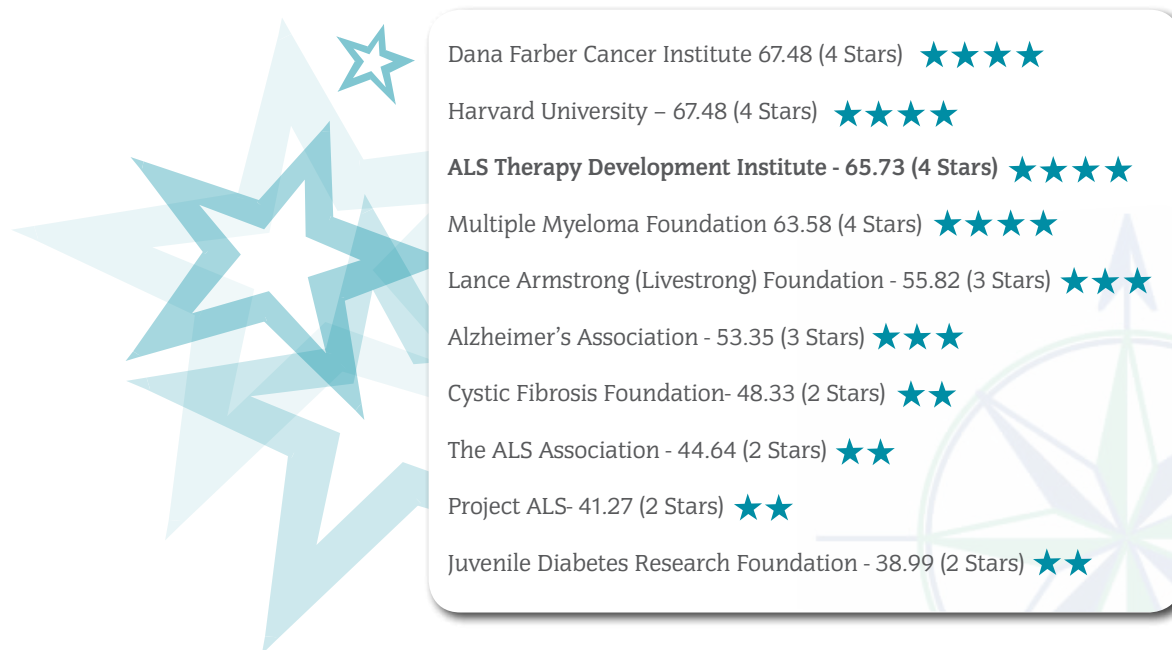
KEN BERGER, CEO OF CHARITY NAVIGATOR

Through the efforts of hundreds of families that have built ALS TDI over the past decade, we have created the world's first non-profit biotech and a medical research institute that rivals any other in the world in terms of capability, technology and talent. However, we are distinguished in important ways when compared to others. Our focus on accomplishing the urgent therapeutic needs of ALS patients has encouraged us, from the very beginning, to create an institute that is both efficient *and* transparent.

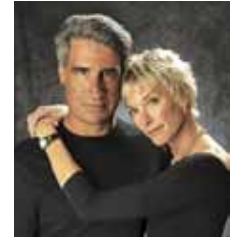
In 2010, the ALS Therapy Development Institute was found by CharityNavigator.com to be one of the most efficient and financially responsible non-profits in the United States. This resulted in ALS TDI being awarded 4-stars, making it the only ALS non-profit in America to receive the highest ranking possible.

"We are proud to announce your organization has earned our 4-star rating for its ability to efficiently manage and grow its finances. Approximately a quarter of the charities we evaluate have received our highest rating, indicating that ALS Therapy Development Institute executes its mission in a fiscally responsible way, and outperforms most other charities in America," continued Berger.

Non-profits are under greater scrutiny than ever by donors, foundations and the government alike, and this new recognition provides those that give to ALS TDI the confidence that their generous support will be used on what they want it to be: research leading to an end to ALS. ALS TDI will continue to focus its energy on that profoundly important goal, and continue to seek ways to continue and to excel in being efficient and transparent toward that end. CharityNavigator.com has rated more than 10,000 non-profit organizations; here is a partial list of how ALS TDI rates compared to others conducting medical research (all based on 2009 data):



The Family Funds at ALS TDI



There are more than 500 of these funds, each playing an important role in driving the research at ALS TDI. The following list recognizes Family Funds that have provided at least \$10,000 over the past 11 years. A complete list, with links to bios and fund activities, is available on our website at www.als.net.

Cumulative Fund Totals as of 7/15/10

	Year Started		Year Started
\$21M+		\$100K-\$249K	
MDA's Augie's Quest	2007	Jim Airey Fund	2001
<hr/>		Jean Angell Fund	2002
\$6M+		Pam Barshack Fund	2005
Stephen Heywood Family Fund	1999	Blazeman Fund	2005
<hr/>		Rick Bowling Fund	2006
\$2.5M+		Brooks Family Foundation	2002
Sean Forrester Scott Fund	2001	Jeff Cronon Fund	2007
<hr/>		David Dorfman Fund	2001
\$2M+		Dick Douglass Effort	2001
Chris Hobler / Hope Happens	2001	Matt Dowd Fund	2002
Kozmetsky Family Fund	2003	Dunphy Sister's Fund	2002
Tri-State Trek	2005	Larry Ellis Fund	2004
<hr/>		Steve Fowler Fund	2001
\$1M+		David Green Fund	2000
Fran Delaney Fund	2001	Mike Justice Fund	2007
Friends for Faye Fund	2004	Kim Family Fund	2000
Mary Lou Krauseneck Fund	2002	Phil Kramer Fund	2006
Stephen Milne Effort	2002	Chris Martin Fund	2005
Corey Reich Fund	2007	Ken Melanson's Quest for a Cure	2004
<hr/>		Pittsburgh Families Efforts	2003
\$500K-\$999K		Jim Raspanti Fund	2002
Bruce Edwards/Tom Waston Fund	2003	Dick Sanderson Fund	2005
DeeDee Fornengo Fund	2002	Herb Schwartz Fund	2004
Jeff Julian Fund	2003	Christy Sloan Fund	2005
<hr/>		Scott Stafne ALS Research Fund	2004
\$250K-\$499K		Team Gey	2007
ALS Family Charitable Fund	2001	Ternet Friends Fighting ALS Fund	2003
Tom Becker Fund	2004	Torretta Fund	2004
Jim Canty Fund	2000	Michael Winston Research Fund	2008
Pam Callahan Fund	2007	<hr/>	
Marie Garratt Memorial Fund/Dash for a Cure	2003	\$50K-\$99K	
Jeff Hadley Fund	2006	A Cure is Coming Walk	2005
HMS Host Fund	2004	Edward Bingham Fund	2001
Larry Manes Fund	2000	Lee Blaskovich Memorial ALS Research Fund	2005
The James and Alice McGonagle Charitable Trust	2004	Bourassa Fund	2005
Jack Orchard Effort	2001	Steve Carlin Fund	2001
Ride for Life Fund	2000	Paul Gerbick Fund	2002
Margaret Roblin Fund	2008	Go To Bed Laughing Fund	2003
Stanfield Family ALS Research Fund	2003		
Jenny Stoddard Family Fund	2003		
Anthony Tucker Fund	2000		

The Family Funds at ALS TDI continued

	Year Started
Michael Goldsmith Fund	2009
Steve Greenspan Fund	2006
Rubin Kuznitsky Fund	2004
Tom Larsen Challenge	2003
Manhattan Fund	2008
Elliot Macht Fund	2000
Roby Molnar Swiss Fund	2004
Melba Moeck Fund	2005
Jennifer Nichols Fund	2000
Olson Family ALS Research Foundation	2006
Orange County Fund	2008
Parkersburg Area Community Foundation	2008
Payne Family Fund	2006
David Reinstein Fund	2003
Jeff Repetto Fund	2004
Joe Shambo Fund	2004
Chris Stoikos Fund	2005
The Dont Tap Out Fund	2009
Trude Klugman Fund	2000
Westhaven Charities Fund	2007
Stephen Yates Fund	2000

\$25K-\$49K

5430 Sports Fund	2007
Dean Adraktas Fund	2001
Linda Anton Fund	2005
Neil Brouman Fund	2001
Brian Byrd Fund	2007
Caccomo Family Foundation	2005
Costa Family Fund	2008
Laughlin Family Fund	2001
Steve Lewis Fund	2002
Maine West High School Fund	2008
Jan Monier Fund	2008
Northport High School Fund	2007
Anita Schein Hecker Fund	2007
Jim Slovick Fund	2005
Ellen Sutherland Fund	2005
The Carter Family ALS Fund	2003
Tow Family Fund	2003
Jeff Ureel Fund	2002
Steve Weekes Fund	2005

\$10K-\$25K

	Year Started
Bryan & Mark Allain Fund	2002
ALS Hope San Diego Fund	2009
ALS Soccer Cup	2004
Ann Arbor Active Against ALS Fund	2008
Robin Arnold Fund	2005
Barretti Family Fund	2006
Big G Fund	2007
Joan Blum Fund	2000
Lynn Capria Fund	2006
Peter Catucci Fund	2009
Peter Colichidas Fund	2009
Dennis Coogle Fund	2009
Cubby Cronan Fund	2004
Donna Dake ALS Research Fund	2004
Michael Donnelly Fund	1999
Eddie Esparza Fund	2007
Father/Son Fund	2009
Friends of Harry Gianneschi	2002
Griffin Family	2006
Jenny Hoff Spokane Family Fund	2007
Jack Hoffman Fund	2000
Hope for Heidi Fund	2009
Nick Huber Fund	2008
Jim Hughes Fund	2006
Will Hubben ALS Research Fund	2002
Its Just Lunch Fund	2007
Deane Jewell's Team	2003
Walter Knopp Fund	2003
Peggy Lanza Fund	2002
Elaine Leavitt Fund	2005
Cyndee Luedecking Fund	2006
Doug McGuinness Fund	2005
Scott McWhorter Fund	2008
Meadowlark Fund	2007
Medved Fund	2007
Meridiths Fight 4 Life	2008
Richard M. Mott Effort	2001
Myrtle Beach Golf Holiday Fund	2004
Oakland Activities Association	2009
Roger Poirier Fund	2001
Ride for Roger	2009
Bob Rosencrans Fund	2008
Salzarulo Fund	2009
Paul Sundman Fund	2007
Carl Tanner Fund	2004
Teach to Fight ALS	2004
Team Sheila	2008
Team Virden	2007
Matt White Fund	2008
Wolfmom Family Fund	2002





THE LEADERSHIP GIVING *Circle*
ACCELERATE RESEARCH

The Leadership Giving Circle includes all individual donors that have provided significant financial support to ALS TDI in the previous calendar year. Each member is recognized here in the 2010 Annual Report, at our annual Leadership Summit and on our website.

Calendar Year 2010

Research Champion (\$25,000+)

Name	Fund
ALS Hope Foundation of San Diego	JoEllen Shea Fund
Betty Thysen Trust	David Thysen Fund
Boston Foundation	Wiley Family Fund
Javier Burillo	Corey Reich Fund
Department of Defense	
Carol M Foy	Marie Garratt Memorial Fund
Leona M. and Harry B Helmsley Charitable Trust	
Muscular Dystrophy Association	
Olson ALS Foundation, Inc.	Olson ALS Fund
Raynier Institute and Foundation	Salzarulo Fund
Theodore S and Wendy C Reich	Corey Reich Fund
Gary Reznikov	Jeff Cronon Fund
RGK Foundation	
Ride For Life INC	
Ronald E Russ	
Dick and Dawn Sanderson	Dick Sanderson Fund
Sierra Pacific Foundation	Corey Reich Fund
Bruce Taylor, Taylor Fresh Foods Inc.	Corey Reich Fund
Team Town	Bill Town Memorial Fund
The David A Couch ALS Neuromuscular Disease	
Fund of the Parkersburg Area Community Foundation	Parkersburg Area Community Foundation
The James and Alice McGonagle Charitable Fund	
The Jeff Julian ALS Foundation	The Jeff Julian Foundation
The San Diego Foundation Team Godfather	
Charitable Foundation	Team Godfather
The Thorson Foundation	
The Walter S and Lucienne Driskill Foundation	
Westphal Family Foundation	Corey Reich Fund
The Wiley Family	Richard A Wiley ALS Fund
Michael Wilson	Dallas ALS Fund

Research Steward (\$5000+)

Name	Fund
Steven and Wendy Baldinger	Michael Winston Research Fund
Connie M Becker	Payne Family Fund
Alice E Bird	Anthony Tucker Fund
Tracie Blaser	HMS Host Fund
Dennis and Patricia-Ann Bourassa	Bourassa Fund
Jeffery and Terry Boyd	Corey Reich Fund
William Brewster	Bernie Martinelli Fund
Alexander Bromley	
Donald F Callender	
Douglas Carlston	Broderbund Fund
Peter Colichidas	Peter Colichidas Fund
Virginia Davidson	Jeff Cronon Fund
Jonathan Durst	
Carol Ann Garratt	Marie Garratt Memorial Fund
Lee Heffernan	Jeff Cronon Fund
Christopher and Beth Kempf	Friends For Faye Fund
Mickey and Rita Kieffer	Michael Winston Research Fund
Dorothy Ludik	
Herbert and Suzanne Lynskey	Stanfield Family ALS Research Fund
Shelia Mcadams	Meridiths Fight 4 Life Fund
Sarah Miller	Friends For Faye Fund
Darryl Minardi	HMS Host Fund
Chris and Deborah Minervino	Ken Melanson's Quest for a Cure
Thomas Moscoe	Michael Winston Research Fund
George O'Connell	HMS Host Fund
Debra Pierce	Dallas ALS Fund
Roger Pierce	Dallas ALS Fund
Michael Pierce	Michael Winston Research Fund
Doug Reich	Corey Reich Fund
Kenneth Renko	HMS Host Fund
Larry and Susan Rickson	Bike 4 ALS Spinathon
David and Mitzi Sabato	Friends For Faye Fund
Ron Sacco	ALS TDI Golf
Manfred and Fiona Sandler	Jeff Cronon Fund
Gary and Lindy Sitzmann	Corey Reich Fund
John and Iola Sobeck	Tri State Trek
Carol Stillwell	Pam Callahan Fund
George Tinsley, The Tinsley Group Inc	HMS Host Fund
Robert Tickman	Weston Hills 4 ALS
Daniel and Theresa Walner	Corey Reich Fund
Michael and Maria Walton	Corey Reich Fund
Michael Wilson	Dallas ALS Fund
The Big G Foundation	Big G Fund
Pfizer Foundation Matching Gift Program	Bourassa Fund
Shahan and Camilla Soghikian Charitable Trust	Corey Reich Fund
Connecticut Friends For ALS Research	Elliot Macht Fund
Memorial Health System	Friends For Faye Fund
Us Foodservice	HMS Host Fund
Gannett	HMS Host Fund
The Boston Beer Company	HMS Host Fund
HMS Host	HMS Host Fund
National Basketball Retired Player Assoc	HMS Host Fund
Healthport Technologies	Jeff Cronon Fund
Cleveland Brothers Equipment Company Inc	
Core Network LLC	Rick Bowling Fund
Br Golf Investors LLC	Roger Long Fund
The Dana J Schneider Family Foundation	Tim Schneider Memorial Fund
The Steven A. and Alexandria M. Cohen Foundation, Inc	Tri State Trek

Research Visionary (\$10,000+)

Name	Fund
A Midwinter Night Dream	Anne Marie Schlekeway Fund
Adelard A. and Valeda Lea Roy Foundation	
ALS Family Charitable Foundation Inc	ALS Family Charitable Fund
Ann Arbor Active Against ALS	Ann Arbor Active Against ALS
Jeffrey Bartfield	HMS Host Fund
Chris Stoikos Memorial Foundation	Chris Stoikos Fund
Don Davis Auto Group	Dallas ALS Fund
Stella Matutina Foundation	Tri State Trek
Fran Delaney Foundation	Fran Delaney Fund
Gene and Jerry Jones Family	Dallas ALS Fund
Don and Toni Loback	Friends For Faye Fund
Mary Kay Inc	Dallas ALS Fund
Philip Minervino	Ken Melanson's Quest for a Cure
Nokia Inc.	Andy 'Doc Philips' Fund
Edoardo Oliveira	
Storyzon, LLC	Corey Reich Fund
The MBK Foundation	Corey Reich Fund
The Overaa Family Group Charitable Trust	Corey Reich Fund
The Rotary Club of Mt. Clemens	Mary Lou Krauseneck Fund
William and Elizabeth Rieth Charitable Foundation	
Woodbine Bend Golf Course	Stoddard Family Fund

Research Advocate (\$2500+)

Name	Fund
JohannaAbreu	ALS TDI Golf
Alpha Baking Company	HMS Host Fund
ALS of Utica	ALS of Utica
Joe Atkins	Dallas ALS Fund
Bank of America Matching Gifts	
Butler Wooten and Fryhofer LLP	Jeff Cronon Fund
Eric and Allison Cape	Jeff Cronon Fund
Patrick Casey	HMS Host Fund
Mary Cirafice	HMS Host Fund
Kelley Copeland	Meridiths Fight 4 Life Fund
Sand Creek	Morgan Stanley Challenge
Ann DeAngelo	Corey Reich Fund
Carolyn Dietz	Corey Reich Fund
Dr. Bill and Florine Mark Ross Fund	Florine Mark-Ross Fund
Essex County Community Foundation	Tri State Trek
Justin Folkers	Tri State Trek
Garner Environmental Services	Stanfield Family ALS Research Fund
Thomas and Audrey Gavin	
Neal Gilbert	HMS Host Fund
Bruce and Jill Gonigam	Payne Family Fund
Group360 Visual Communications	Dallas ALS Fund
Hardin Construction Company LLC	HMS Host Fund
Heart And Vascular Institute At St. Joseph's Hospital	Jeff Cronon Fund
Talmage Hocker	Jeff Cronon Fund
John Christner Trucking Inc	Stanfield Family ALS Research Fund
John R. Lyman Company	Anthony Tucker Fund
Hilary Jordan	Jeff Cronon Fund
Kaizen Corporation	Tri State Trek
Konica Minolta Business Solutions U.S.A. Inc	Rick Bowling Fund
Hedy Krenn	Jim Raspanti Fund
Dave Lafferty	HMS Host Fund
William Lavelle	HMS Host Fund
Left Brain Right Brain Productions LLC	Anne Marie Schlekeway Fund
Christopher Lettieri	HMS Host Fund
Conley Griggs Llp	Jeff Cronon Fund
Steve and Cynde Lundgren	Corey Reich Fund
Mahaffey Pickens Tucker LLP	Jeff Cronon Fund
Maritech Windows LLC	Meridiths Fight 4 Life Fund
Martignetti Companies	
McCain Foods USA, Inc	HMS Host Fund
James McCorkle	HMS Host Fund
Mcfaddin Marketing Inc	HMS Host Fund
Keith Melanson	Ken Melanson's Quest for a Cure
Morgan Stanley Foundation	Morgan Stanley Challenge
Cory Morris	Dallas ALS Fund
Morrow and CO	Tri State Trek
Mott's Llp	HMS Host Fund
John and Catherine Nathan	
Martin and Mary O'Connor	Tri State Trek
Timothy HMS Host Fund	
Michael Parks	Jeff Cronon Fund
Party Line Tent Rentals	Tri State Trek
Pepin Distributing Company	HMS Host Fund
Peter B Mark and Lynn R Goldsmith	Michael Goldsmith Memorial Fund
Thomas Peterffy	Ted Jacobowitz ALS Memorial Fund
Rick Peterson	Stanfield Family ALS Research Fund
Thomas and Elizabeth Phelps	Jeff Cronon Fund
Jacquelin Portewig	Corey Reich Fund
Susan Powell	HMS Host Fund
Radiology INC Foundation	Friends For Faye Fund
Mary C Raspanti	Jim Raspanti Fund
Rudolph and Laurie Reich	Corey Reich Fund
Reich and Walner LLP	Young Faces of ALS
Robins Kaplan Miller and Cires Charitable Foundation	Michael Winston Research Fund
John Roche	A Cure is Coming
Ronnie DeThomas ADC Investments LLC	Jeff Cronon Fund
Samuel Rosen	Michael Winston Research Fund
Stephen Scypinski	Tri State Trek
Sara Sloan	Bernie Martinelli Fund
David and Dede Smith	Michael Winston Research Fund
Jenny Stoddard	Stoddard Family Fund
Sidney Suggs	
The Delta Interests LLC	Christy Sloan Fund
The J.M. Smucker Company	HMS Host Fund
The Lobster Shack at Two Lights	Tri State Trek
Total Automotive Solutions	Tri State Trek
Ryan Toth	HMS Host Fund
Gilles Trepanier	HMS Host Fund

Research Advocate (\$2500+) continued

Name	Fund
UPMC	Rick Bowling Fund
Billy Watson	HMS Host Fund
Anthony and Kelly Wood	Jeff Cronon Fund

Research Sponsor (\$1000+)

Name	Fund
Andrew Altendorf	Stanfield Family ALS Research Fund
Peter Amaro	HMS Host Fund
Patrick J. Ruane and Lindsay S. Dewis	Pam Callahan Fund
Dena I Mendelson and Maureen O'Connor	
Steven W. Hoffman and Patricia K. Lee	Corey Reich Fund
Jamison Arterton Arterton	Tri State Trek
Michael and Jean Artin	
At Home America	Tri State Trek
Rochelle Auld	Dallas ALS Fund
Thomas and Mary Austin	
Avex LLC	Michael Winston Research Fund
Kathryn Ann Berardi	Tri State Trek
Brett and Jennifer Bergman	Chris Woodward Memorial Fund
Frederick and Kathleen Berkheimer	Bernie Martinelli Fund
Marc Berman	Peter Catucci Fund
Bob and Jane Berryhill	Stanfield Family ALS Research Fund
Steven Bishop	HMS Host Fund
Bistro Five	Tri State Trek
Bernard and Bonnie Blake	Michael Winston Research Fund
Jeanne Boland	Tri State Trek
Lynn Bond	Andy 'Doc Philips' Fund
Daphne Boyle	Corey Reich Fund
Scott Bradley	
Barbara Lee Brand	Pam Callahan Fund
John Brenkus	Bob Sepucha Fund
James F and Jo Anne Brooks	
Christopher Brown	Jeff Hadley Fund
Mitchell and Jan Burke	Michael Winston Research Fund
Charles Burpee	Tri State Trek
Thomas Callahan	Tri State Trek
Donald M and Pamela Callahan	Pam Callahan Fund
Cambridge Brewing Company	Tri State Trek
Peter Cantrell	Dallas ALS Fund
Shawn Cantrell	Dallas ALS Fund
Frederic L and Marie N Carter	Corey Reich Fund
Mollie Caselli	
John Caulfield	Dallas ALS Fund
John A and Nancy I Ceconi	Corey Reich Fund
Robert and Debra Cheshire	William Hassel Fund Bill Hassel Documentary (F475 E3 Y10)
Christopher Moore and Christina Zielinski	John Wake Fund
Kenneth Christopher	Corey Reich Fund
Richard Clark	Bob Sepucha Fund
Robert Clausen	Friends For Faye Fund
John Clippinger	Tri State Trek
SPARTA dba Cobham Analytic Solutions	Bob Sepucha Fund
Coca Cola Enterprises	Dallas ALS Fund
Benjamin Cohen-Leadholm	Tri State Trek
William Cokeley	Dallas ALS Fund
Thomas Colligan IV	Tri State Trek
William Collins	HMS Host Fund
Luke Costello	HMS Host Fund
Robert H and Virginia Cox	
David Coye	David Green Fund
David G Coye	David Green Fund
Jeff L Cronon and Angela F Cronon	Jeff Cronon Fund
Stevan and Yvette Cronon	Jeff Cronon Fund
Crown Imports	HMS Host Fund
David Darcy	Anthony Tucker Fund
Douglas Davidson	
Kathleen Davis	ALS TDI Golf
Mary Deal	Corey Reich Fund
Steven Dearing	Tri State Trek
Anthony and Mary DeFrance	Michael Winston Research Fund
Salvi and Karen Dellabarca	Corey Reich Fund
Cathy DiLorenzo	Michael Winston Research Fund
Christine M Dobie	Corey Reich Fund

Research Sponsor (\$1000+) continued

Name	Fund
Ralph and Barbara Dobson	Friends For Faye Fund
Bruce Douglas	Michael Winston Research Fund
Stephen and Pam Douglass	Dick Douglass Effort
Stephen Duval	Anthony Tucker Fund
Patrick F and Jennifer Gore Dwyer	Pat Dwyer Fund
John Dyer	Bob Sepucha Fund
Christopher Elsevier	Jeff Cronon Fund
Brian Exline	Stanfield Family ALS Research Fund
Mike Farrell	Tri State Trek
Fedex	Carla Zilbersmith Fund
First English Ev Lutheran Church	William Hassel Fund Bill Hassel Documentary (F475 E3 Y10)
Glen and Robin Fiyinaka	Corey Reich Fund
Robert Flinn	Corey Reich Fund
Thomas Flynn	HMS Host Fund
Harold and Emily Ford	Bob Sepucha Fund
Maddie Fowler	Steve Fowler Fund
Sbarro Franchise	HMS Host Fund
Roger and Beverly Freeman	Corey Reich Fund
Friends Of Bob F.O.B.	Bob Beshara Fund
Steven Fuller	
Paul Gabrielson	HMS Host Fund
Randy Galloway	Dallas ALS Fund
Tom Galvin	Dallas ALS Fund
Garden Catering	Tri State Trek
Peter John Garratt	Marie Garratt Memorial Fund
Guy George	Jeff Cronon Fund
Steve and Lisa Gerber	Friends For Faye Fund
Joseph Gimilario	Peter Catucci Fund
Kevin Glassman	Tri State Trek
GMC Foundation	Jeff Cronon Fund
Goldman, Sachs & Co. Matching Gift Program	Corey Reich Fund
Goodrich Foundation	Dick Douglass Effort
Joseph and Lisa Grandizio	Jim Raspanti Fund
Helen Grant	
Sue Griffey	Tri State Trek
Richard & Nancy Griffith	Corey Reich Fund
Groupe le Duff Amerique Societe en Commandite	HMS Host Fund
Tim Guild	Dallas ALS Fund
Stephen Hackney	Charles Hackney Memorial Fund
Bruce Hain	
Alfred Hammer	
Dale and Christene Hansen	Dallas ALS Fund
Eryn Harrison	Corey Reich Fund
Scott and Lyndsay Harshman	Corey Reich Fund
Wesley W and Harriet A Heitzman	Broderbund Fund
Hewlett Packard Company Foundation	Marie Garratt Memorial Fund
Kent Hill	
Christopher Hinton	Jeff Cronon Fund
Roger Hobby	
Charlene Hollingsworth	Dallas ALS Fund
Richard Horvitz	Broderbund Fund
Jane Houston	Tri State Trek
Ann Huber	
Barbara Hunt	HMS Host Fund
Scott Iles	Bernie Martinelli Fund
Indiana State Seniors Golf Assoc	Melba Moeck Fund
Jean Inman	Andy Doc Philips' Fund
Insource Services, Inc.	
John Jacobs	HMS Host Fund
Edward and Kathleen Jacobs	Jim Raspanti Fund
Mark and Patricia Jennings	Andy Doc Philips' Fund
John Redden Memorial	John Redden Fund
Gary and Ava Johnston	Johnson & Johnson ALS TDI Golf
Terri Jondahl	Bernie Martinelli Fund
JPMorgan Chase	Jeff Cronon Fund
Brian and Sandra Kamin	Tri State Trek
Irene Keating	Michael Winston Research Fund
Thomas Keating	Corey Reich Fund
Jason and Emily Keller	Corey Reich Fund
Chris Kelly	
Ken S Foods Inc	Peter Catucci Fund
Anthony A. and Randee J. Killeen	HMS Host Fund
Allison Kimmich	Michael Winston Research Fund
Bill Kirchoff	Tri State Trek
Russell Kuck	
Rubin P. Kuznitsky	HMS Host Fund
	Morgan Stanley Challenge

Research Sponsor (\$1000+) continued

Name	Fund
Maryann Larkin	Pam Callahan Fund
Harold Larson	
Lawrenceville Suwanee LLC	Jeff Cronon Fund
Steve and Sheri Lear	Michael Winston Research Fund
Camille Lee	HMS Host Fund
Dominic Leong	HMS Host Fund
Libbey	HMS Host Fund
Tommaso Ligotti	Tri State Trek
Carol Lloyd	
LMJ Trucking	Stoddard Family Fund
Robert and Loren London	Robert London Fund
Bill and Jo Anne Lopatin	Friends For Faye Fund
Lopresti Speed Merchants Inc	Marie Garratt Memorial Fund
Ken Mackler	
J. Paul Maggard	Jeff Cronon Fund
Abraham and Sara Marcus	Friends For Faye Fund
John Maricone	HMS Host Fund
Mike and Barb Mariniello	Bob Sepucha Fund
Markit North America Inc	Tri State Trek
Natsuki Mason	Tri State Trek
MassMutual Financial Group	Tri State Trek
Kyle Mattox	Stanfield Family ALS Research Fund
James Mckay Armstrong	Tri State Trek
Delores Mckibbin	Dallas ALS Fund
Shannon McLaughlin	Tri State Trek
Roderick McRae	ALS TDI Golf
Sanjay Meshri	Stanfield Family ALS Research Fund
Mark Mettelman	Jeff Cronon Fund
Microsoft Matching Gifts Program	
Samuel and Anna Milligan	Friends For Faye Fund
Chris and Deborah Minervino	Ken Melanson's Quest for a Cure
Melba Moeck	Melba Moeck Fund
Aaron Moore	Dallas ALS Fund
Edward and Barbara Morgan	
Barton Morgan Jr.	Jeff Cronon Fund
Chandler Morris	Dallas ALS Fund
Dirk Morris	Dallas ALS Fund
Multisport Fitness	Bike 4 ALS Spinathon
Robert Mundy	Tri State Trek
Pamela Murphy	Tri State Trek
Myron Greenberg and Shelley Kornblum	Michael Winston Research Fund
Leonard and Terry Newman	Michael Winston Research Fund
Cooper Noone	Tri State Trek
Patrick and Jeanne O'Brien	Corey Reich Fund
Mary O'Connor	Stanfield Family ALS Research Fund
Christopher OBrien	Dallas ALS Fund
Ogletree, Deakins, Nash, Smoak and Stewart, PC	Weston Hills 4 ALS
Jonathan Orloff	General Tom Mikolajcik Memorial Fund
Edward Ostrovitz	Dallas ALS Fund
Palm Beach Kennel Club	HMS Host Fund
Scott Parkerson	Christy Sloan Fund Unsolicited (F186)
Passport Foundation	
PatientsLikeMe Inc	Tri State Trek
Betty A Payne	Payne Family Fund
K E Pearlless Healey	Tri State Trek
Jerry Penington	Bob Sepucha Fund
Scott Peters	Jeff Cronon Fund
Derek Pfaff	Stanfield Family ALS Research Fund
Sherry Podolak	William Hassel Fund Bill Hassel Documentary (F475 E3 Y10)
Gary Poe	Tri State Trek
Tracy A and Jennifer R Poole	Stanfield Family ALS Research Fund
William Pooley	HMS Host Fund
LeemPoquette	HMS Host Fund
A Colby Powell	Corey Reich Fund
Stanley M Proctor	Olins Family Fund
Ernestine Raclin	Friends For Faye Fund
RAM Pavement Servies Inc	Bernie Martinelli Fund
P. Raskin	Jeff Hadley Fund
Greg Rausch	Bob Sepucha Fund
Ken Rawlings	Corey Reich Fund
Reebok Human Rights Foundation	Tri State Trek
Thomas Reen	
Thomas and Robin Revelli	
RG2 Claims Administration LLC	Steve Milne Effort
Richard Choi D.M.D.	Corey Reich Fund
Paul Rockar	Rick Bowling Fund
Daniel Rosen	Michael Winston Research Fund

Research Sponsor (\$1000+) continued

Name	Fund
Nathan Ross	Michael Winston Research Fund
Ann Rouse	
Daniel Rowell	Costa Family Fund
Dennis J and Mary J Royer	
Kenneth Rubenstein	Tri State Trek
Ruth A Rubenstein	Tri State Trek
Justin Rumley	Michael Winston Research Fund
Armins and Cynthia Ruis	Pam Callahan Fund
Bill Russell	Jeff Cronon Fund
Tony Huey and Karen P Sakai	Corey Reich Fund
Janette Sandberg	Tri State Trek
Sca Tissue North America LLC	HMS Host Fund
John Scales	Jeff Hadley Fund
Steven and Nancy Schachtman	Michael Winston Research Fund
Arnold Schaeffer	Tri State Trek
John Schaeffler	Bob Sepucha Fund
Shawn Schulte	Tri State Trek
David Seago	Jeff Cronon Fund
Jay Shafer	Dallas ALS Fund
Steven J and Michelle H Shaller	Michael Winston Research Fund
Kent Shull	Dallas ALS Fund
Lawrence and Patricia Siskind	Corey Reich Fund
Alvin Siteman	Friends For Faye Fund
Janet Smith	Tri State Trek
Southern Wine and Spirits of America, Inc.	HMS Host Fund
Scott and Kirsten J Stafne	Scott Stafne ALS Research Fund
Kim Staley	
Debra and LH Stanfield	Stanfield Family ALS Research Fund
George & Lisa Steinmetz	Tri State Trek
Jeffrey Stephens	HMS Host Fund
Stonebridge Construction LLC	Meridiths Fight 4 Life Fund
John Sullivan	
Mary Ellen Swank	
Jerry Szczepanski	Dallas ALS Fund
Mark Tarr	Steve Diekhoff Fund
Team Diek	Steve Diekhoff Fund
Texas Best Smokehouse	Dallas ALS Fund
Sid Theus	Jeff Cronon Fund
Larry and Janet Thompson	Friends For Faye Fund
An Thorsen	Corey Reich Fund
Thrivent Financial	William Hassel Fund Bill Hassel Documentary (F475 E3 Y10)
Joey Tominovich Jr	Peter Catucci Fund
Michael and Judith Travill	Pam Callahan Fund
Brien Traynor	Corey Reich Fund
Malcolm and Kathleen Tuesley	Friends For Faye Fund
Daryle Uphoff	Michael Winston Research Fund
Jeff Vernier	Dallas ALS Fund
Victoria Advocate	William Hassel Fund
Christine Virden	Tri State Trek
Kathleen Waddle	Dallas ALS Fund
Terry Wade	Michael Winston Research Fund
Matthew Watkins	Tri State Trek
Wayne County Community Foundation	Bloomings Believers
Webcast Group Inc	
William Weinstein	
Eric Welke	Dallas ALS Fund
R Westphal	Corey Reich Fund
Eric and Amy Whipple	Michael Winston Research Fund
Whole Foods Market	Tri State Trek
Dorothy Wiekamp	Friends For Faye Fund
Joe and Janice Wilburn	Stanfield Family ALS Research Fund
Theodore Wilkinson	Tri State Trek
Christopher Williams	
Sharon Wilson	HMS Host Fund
Jay C Klemme and Anne S Wilson	Bloomings Believers
John Wing	Tri State Trek
Wings of Alpharetta, Inc.	Bob 'Bullet' Morris Fund
Jeffrey and Mona Winston	Michael Winston Research Fund
Fredrick Wiste	
Patricia Wolf	
Frank Wood	Jeff Cronon Fund

Research Sponsor (\$1000+) continued

Name	Fund
Bruce and Susan	Worster Bob Sepucha Fund
Teresa Wright	
Linda Yahner	Tri State Trek
Yogurt Ventures USA Inc	HMS Host Fund
Zierk Family Trust	Tri State Trek
Zimmerer Murray Conyngham and Kunzier	Jeff Hadley Fund
Michael Zimmermann	Dallas ALS Fund
David Zimmerman	Corey Reich Fund

The hard part has always been how do we take what we know about this disease and use that knowledge to create medicine that helps people today.

Steve Perrin, Ph.D.
CEO & CHIEF SCIENTIFIC OFFICER



ALS TDI Board of Directors

Augie Nieto <i>Chairman</i>	Steve Perrin, Ph.D. <i>Vice Chairman</i>
Stanley H. Appel, M.D.	Alexander Cappello
James Allen Heywood	John B. Heywood, Ph.D.
Spiros Jamas, Ed.D.	Keith Melanson
Leslie Michelson	Rob Rodin
Ted Reich, J.D. & CPA	John Sutherland

2010: A Year of Milestones in Technology and Innovation

For the fiscal year ending December 31, 2010, ALS TDI recognized more than \$8 million in public support and unrestricted revenue. This year began with the publication of an important paper in a highly respected scientific journal, saw the acquisition of several new technologies and tools that have greatly impacted the speed of our research, and concluded with the successful launching of a nationwide awareness campaign about the Young Faces of ALS. A full breakdown of our assets, liabilities, revenue and expenses is below.

Assets

Unrestricted Assets

<i>Cash</i>	4,623,230
<i>Accounts and Pledges</i>	27,393
<i>Investments</i>	4,840
<i>Fixed</i>	688,611
<i>Other</i>	49,621

Restricted Assets

<i>Temporary</i>	-
------------------	---

Temporary EOY Net Assets **\$5,578,935**

Liabilities & Net

<i>Total Liabilities</i>	1,087,357
<i>Total EOY Net Assets</i>	4,491,578

Total Liabilities & Net Assets **5,578,935**

Public Support

<i>Grants</i>	5,068,933
<i>Special</i>	1,973,889
<i>General</i>	571,593
<i>Donated</i>	31,017
<i>Interest</i>	30,729

Net Public **8,051,161**

Expenses

Program

<i>R&D</i>	
<i>Science</i>	1,845,764
<i>Lab</i>	2,873,177
<i>Informatics</i>	317,721
<i>Patient Services</i>	266,904
<i>Clinical</i>	10,092
<i>Communications</i>	772,001
<i>BD</i>	138,786

Total Program **6,224,445**

Support

<i>General</i>	629,904
<i>Fundraising</i>	597,891

Total Support **\$1,227,795**

Total Expenses **7,452,240**

America's #1 Rated Non-Profit ALS Research Organization



IN 2010, ALS TDI WAS AWARDED THE HIGHEST RATING- 4 STARS- BY THE PREMIER INDEPENDENT CHARITY EVALUATOR, CHARITYNAVIGATOR.ORG; THE HIGHEST RATING AMONG ALL US-BASED ALS ORGANIZATIONS. A focus of the Institute has always been to keep its fundraising costs to a minimum while at the same time raising significant dollars for research. This also reflects the commitment and determination from the 200 grassroots fundraising events this year that donations are spent efficiently and earnestly in order to achieve our shared mission: to end ALS.

The graph below depicts the total spending and percentage of total expenses for the various categories reported on each year. The Institute's finances are in a strong position and reserves continue to remain high, allowing for long-term and strategic investments and planning to advance more potential therapeutics from the lab bench to the bedside quicker than ever before. This key additional funding will enable more novel therapeutic candidates to move from the preclinical pipeline into the partnering and clinical trial phases of development.

<u>Expenses</u>	<u>2010</u>	
	<u>Amount</u>	<u>Ratio</u>
<u>Program</u>		
R&D		
<i>Science</i>	1,845,764	24.77%
<i>Lab</i>	2,873,177	38.55%
<i>Informatics</i>	317,721	4.2%
<i>Patient Services</i>	266,904	3.58%
<i>Clinical</i>	10,092	0.14%
<i>Communications</i>	772,001	10.36%
<i>BD</i>	138,786	1.86%
<u>Total Program</u>	<u>6,224,445</u>	<u>83.52%</u>
<u>Support</u>		
<i>General</i>	629,904	8.46%
<i>Fundraising</i>	597,891	8.02%
<u>Total Support</u>	<u>1,227,795</u>	<u>16.48%</u>
<u>Total Expenses</u>	<u>7,452,240</u>	<u>100.00%</u>



Pipette tips

SGM

M41220

M41224

M41225

M41287

M41288

M41210

M41210

M41247

M41249

M41250

M41251

M41252

M41253

M41254

M41254

M41255

M41256

M41257

M41258

M41259

M41260

M41261
M41262
M41263
M41264
M41265
M41266
M41267
M41268
M41269
M41270
M41271
M41272
M41273
M41274
M41275
M41276
M41277
M41278
M41279
M41280
M41281
M41282
M41283
M41284
M41285
M41286
M41287
M41288
M41289
M41290
M41291
M41292
M41293
M41294
M41295
M41296
M41297
M41298
M41299
M41300



215 First Street, Cambridge, Massachusetts 02142

TEL: 617.441.7200 FAX: 617.441.7299

EMAIL: info@als.net WEB: www.als.net