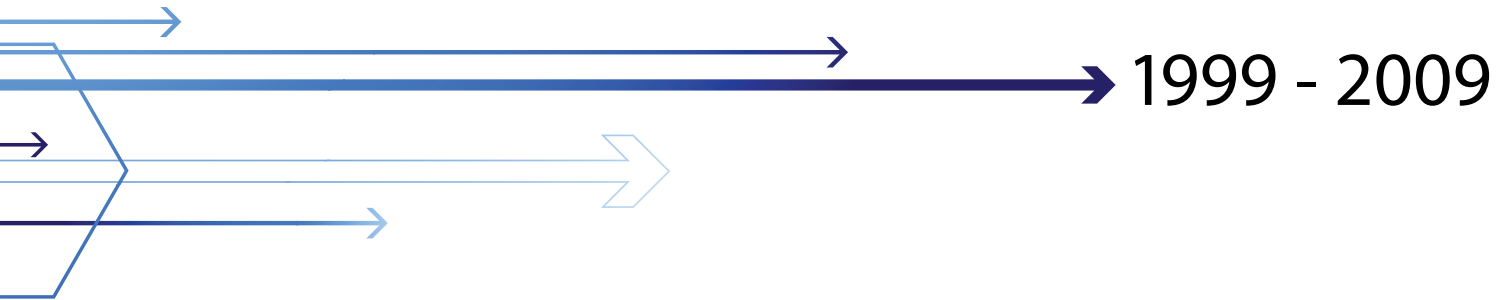


ALSTHERAPY DEVELOPMENT INSTITUTE
10 YEAR ANNIVERSARY



Letter from the CEO

The ALS Therapy Development Institute is unlike any other research center in the world. As you will see from the following pages, the Institute that you have helped to build has overcome many challenges throughout the years. It wasn't a gift from the government or major corporations that formed ALS TDI; it was the accumulated generosity and sense of urgency shared by hundreds of families from all over the world that laid the foundation, fueling research year after year. This dedication has provided nearly \$60 million to ALS TDI and created a center of excellence solely dedicated to responding to the ALS crisis. Just as we were driven and inspired by ALS patients ten years ago, so are we today.

The face of the Institute has changed dramatically over the years as well. New families have joined those whom have been here since the beginning. New technology and researchers have become part of the team, allowing us to do more with every dollar we receive. Each and every ALS patient, caregiver, family member, donor, friend, employee, collaborator, consultant, and partner plays an important role in the advancement of our mission. Every new step taken toward that goal is only possible because of those that came before, and we continue to honor past contributions by never wavering in our resolve.

In order to begin to tell the story of ALS TDI we must recognize the families that have funded our research, and as such this annual report starts by first listing the Family Funds that have made our work possible. The generosity of the ALS community and our partners at the MDA and the Department of Defense, along with the dozens of academic and industry collaborations that we work with have significantly shortened the length of time and cost of drug development for ALS.

This annual report contains a brief history of ALS TDI over the past 10 years. The core values that drive us today have not changed from what they were ten years ago: courage and love, challenge and respect, hope, an adventurous spirit and patients today. We will always make decisions with those battling ALS today at the forefront of our minds. It is a privilege to report to you, that over the past year, we have made great strides, however more work is needed if we are to turn incremental advancements into treatments for patients today.

I am daily reminded of the responsibility I shoulder as I look back at ALS TDI from the beginning. What this place means to those that have been part of its creation and growth, the loss that has been incurred, and the hope we must work daily to make real. As a scientist it is my duty to look at ALS in an unbiased way and ask the tough questions about ALS. As the head of ALS TDI it is my profound responsibility to ensure our progress, for all those that supported us and for those counting on us today. This is your lab and I thank you for your support.

Sincerely,



Steve Perrin, Ph.D.
CEO & CHIEF SCIENTIFIC OFFICER

Augie Nieto, CHAIRMAN OF THE BOARD

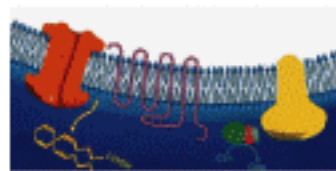
BOARD OF DIRECTORS

Leslie Michelson, *Vice Chair*, Theodore Reich, *Treasurer*,
James Allen Heywood, John Heywood, Spiros Jamas,
Robert Rodin, Alexander Cappello, John Sutherland,
Keith Melanson, Stan Appel

1999



James Allen Heywood starts the ALS Therapy Development Foundation three months after his brother Stephen is diagnosed with amyotrophic lateral sclerosis (ALS, Lou Gehrig's disease). A nonprofit biotech, ALS TDF is dedicated to drug development for patients today. Stephen is the first donor, writing a check for \$10,000 and telling his brother to "get going."



First therapy concept developed: replace EAAT2 protein using gene therapy.



Alex & Brit d'Arbeloff make \$100,000 donation to ALS TDF.



The Uptake Therapy Project kicked off in partnership with Dr. Jeffrey Rothstein at John Hopkins University.



First annual Belly Dance Extravaganza takes place at Karoun in Newton, MA.

www.als-tdf.org launched.

1999 ANNUAL REPORT



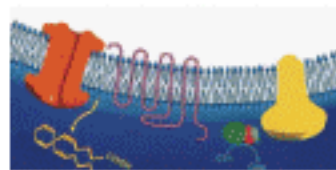
ALS TDF raises \$434,761 in its first year of existence.

OUR FIRST YEAR - THE GIFT OF HOPE

1999



James Allen Heywood starts the ALS Therapy Development Foundation three months after his brother Stephen is diagnosed with amyotrophic lateral sclerosis (ALS, Lou Gehrig's disease). A nonprofit biotech, ALS TDF is dedicated to drug development for patients today. Stephen is the first donor, writing a check for \$10,000 and telling his brother to "get going."



First therapy concept developed: replace EAAT2 protein using gene therapy.



Alex & Brit d'Arbeloff make \$100,000 donation to ALS TDF.



The Uptake Therapy Project kicked off in partnership with Dr. Jeffrey Rothstein at John Hopkins University.



First annual Belly Dance Extravaganza takes place at Karoun in Newton, MA.

www.als-tdf.org launched.

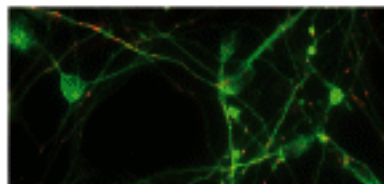
1999 ANNUAL REPORT



ALS TDF raises \$434,761 in its first year of existence.

OUR FIRST YEAR - THE GIFT OF HOPE

2000



The Foundation applies for Phase I Stem Cell Transplant trial. If approved, it would be the first of its kind for ALS in the world.



"Neurobase" developed to track leads and gather information to support research and development.



"ALS In-Vivo Screening Program" launched in the Fall. Scaled up to become largest in the world.

1st annual "Night at Fenway" event held.



ALS TDF's "Friends & Family Community" goes live. Web based fundraising community launched as one of the first in the non-profit world.



Alex & Brit d'Arbeloff make \$300,000 donation to ALS TDF.



The virtual, web-based bulletin board, "The ALS Forum," is launched.



Will Hubben, pALS, established the ALS/MND Research Mail List (later, after his death, it is renamed in his honor as the Hubben Digest). Within its first year, the mailing list grows to over 1,000 email addresses.



Heywood brothers and ALS TDF featured in New Yorker magazine exposé "Curing the Incurable."



ALS TDF raised \$1,562,126 in 2000.

2001



ALS TDF opens first lab inside New England Medical Center in

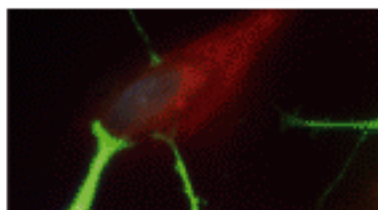
An anonymous donor makes \$1 million grant to ALS TDF.



27 drugs tested in SOD1 mouse; 2 hits.



ALS TDF's Founder and CEO, James Allen Heywood, begins to hold "ALS 101" sessions for ALS patients. The goal is to provide information and encourage discussion among stakeholders regarding drug development.



ALS TDF receives approval to conduct the world's first stem cell trial for ALS. Stephen Heywood and 2 others participate.

**HOPE
HAPPENS**



ALS Hope/Hobler Foundation makes \$500,000 gift to ALS TDF. The Foundation renames its main drug-screen program the "ALS Hope Drug Discovery Center".



Sean Forrester Scott joins ALS TDF as volunteer following his mother's diagnosis. ALS runs in his family and Sean himself has a 50/50 chance of developing it.



www.als-tdf.org gets facelift; designed to include results from research trials and better connect patients and researchers together.



ALS TDF raised \$4,018,069 in 2001.



New funding allows the lab to move to a larger space at the Massachusetts College of Pharmacy by the end of the year.



ALS TDF moves across the Charles River into a larger research facility located in the Harvard Partners building.



28 drugs evaluated and 3 preliminary hits in the SOD1 mouse model.



ALS TDF screens Dapsone, WHI-P131, Celebrex, Chlorpromazine, Copasone, Gusperimus, Quinacrine, Riluzole, Thalidomide, CVF, DDC IIG, Indomethacin, Leflunomide, Memantine and others.



Ten ALS 101 sessions held throughout the year.

2002

Established 4 external research collaborations with academics and more than 25 partnerships with biotech and pharmaceutical companies.

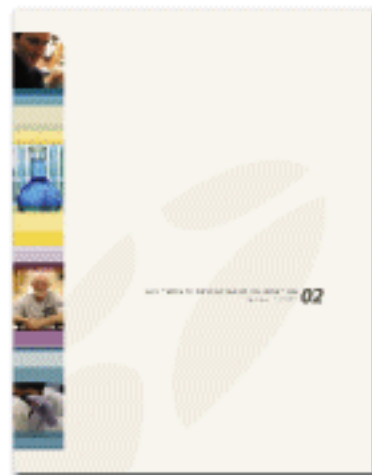
An anonymous donor provides a \$300,000 grant funding the development of a new bioinformatics system at ALS TDF.



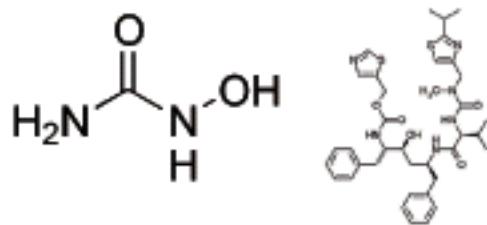
The Friends & Family Community, the Foundation's main fundraising arm, doubles its income to \$1.8 million.



Alex & Brit d'Arbeloff make \$1,000,000 donation to ALS TDF.



ALS TDF raised \$4,335,417 in 2002.



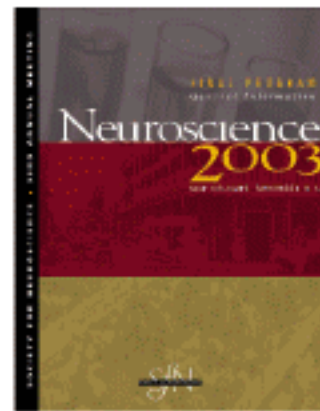
ALS TDF executes a combination drug trial of Ritonavir and Hydroxyurea at the University of San Francisco in Partnership with the Larry L. Hillblom Foundation.



ALS TDF raised \$3,990,771 in 2003.



58 drugs evaluated throughout 2003, including 8 advanced efficacy screens.



ALS TDF research team attends Society for Neuroscience meeting in New Orleans.

2003



The Fran Delaney Fund hits their \$1 million cumulative fundraising milestone in less than 3 years.



PGA Tour Golfers Jeff Julian and Tom Watson, together with Tom's Watson's caddy Bruce Edwards, start "Driving 4 Life," a fundraising effort based on golf. Campaign raises \$1 million by end of the year.



Ronya Kozmetsky makes \$1 million pledge to ALS TDF after the passing of her husband, George, to ALS a year earlier.

"Friends and Family Community" grows to include 70 separate and active funds. Group surpasses \$2 million in annual grassroots fundraising.

HOPE HAPPENS



With a second \$500,000 grant, the ALS Hope/Hobler Foundation becomes the second foundation to provide \$1 million in funding to ALS TDF.

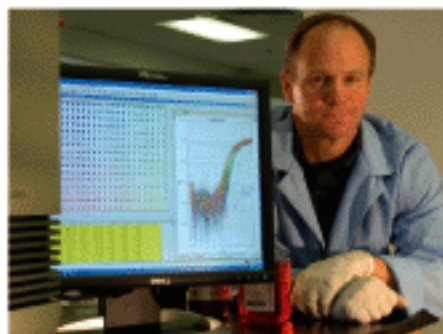
2004



ALS TDF moves to its current location, a 16,000 square foot space in Cambridge's bio tech hub Kendall Square.



ALS TDF staff attend 2004 Society for Neuroscience in San Diego.



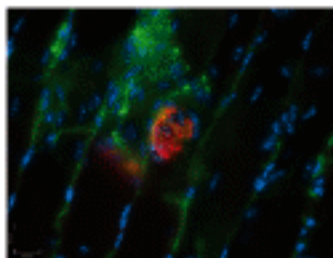
Gene Expression Core launched at ALS TDF with the purchase of a Taqman. This high-end device is capable of measuring the expression of genes, aiding in the search for biomarkers of disease.



Scientists at the Institute innovate a novel device known as an intrathecal catheter, which delivers potential therapeutics directly to the spinal cord of the mouse.



His Brother's Keeper, a book by Jonathan Weiner, chronicles Stephen's illness and Jamie's founding of ALS TDF.



ALS TDF hires industry trained discovery experts, establishing a dedicated Discovery Biology Core.



ALS TDF raises \$3,447,963 in its 5th year of existence.



TRI-STATE TREK

Nearly 100 cyclists, including many pALS, participate in the Tri-State Trek, a 270-mile bike ride from Boston to NY.



A Biosafety Level 2 Lab is constructed at ALS TDF. The secure lab allows expansion of gene therapy and cell-based treatment pipelines.



Mass spectrometry core created. The goal is to monitor drug levels attained in any tissue type.



Passion For Life Fund, inspired in 2000 by pALS Mary Lou Krauseneck, reaches its \$1 million fundraising milestone.



2005



Jamie articulates the Apollo projects, an ambitious vision for ALS TDF which includes novel discovery and drug development approaches combined to move drugs into the clinic faster.



ALS TDF raises \$3,509,483 - spends 79% on R&D. This makes the Foundation the largest funded R&D program exclusively focused on ALS.

ALS TDF Leadership Summit

August 25-27, 2005
Cambridge, MA



1st Annual Leadership Summit held in Cambridge at the Massachusetts Biotechnology Council followed by a lobster dinner and Awards at the Heywood's home in Newton, where the Foundation first began to operate.



The 1st Annual "A Cure is Coming!" walk is held. Dozens of patients and families walk from Lexington Battle Green to the Old North Church in Boston to raise ALS awareness.



ALS TDF purchases a powerful Zeiss X1 microscope and builds up its molecular imaging capabilities thanks to an allocation from the Jeff Hadley Fund.

Leadership Awards created, including: Fran Delaney Challenge & Respect Award, Mary Lou Krauseneck Courage & Love Award, Steve Milne Award, and Stephen Heywood Patients Today Award.

2006



Augie Nieto, diagnosed with ALS in March 2005, commits to raising \$18 million and becomes chairman of the board.



"So Much So Fast", a documentary about the Heywood's, and ALS TDF, premieres at the Sundance Film Festival.



The *In Vitro* Validation Team is organized at ALS TDF. Their primary charge is to validate the activity of small molecule, protein biologics and gene therapy products prior to advancing them to into full in-vivo (animal) testing for efficacy.



November 26th – After eight years living with ALS, Stephen Heywood, the inspiration for ALS TDF, passes away.



Sean Scott is named president of ALS TDF.



Leadership Summit expands dramatically in its second year, moving to the Hotel @ MIT. Drs. John Lincecum, Robert Bowser and Dan Benjamin give updates on their work. The event features talks from newly hired science team members, and a screening of "So Much So Fast".

The US Department of Defense make a \$1.8 million grant to ALS TDF for research into ALS treatments.



ALS TDF has a record breaking fundraising year - recognizing \$5,181,635 in donations.

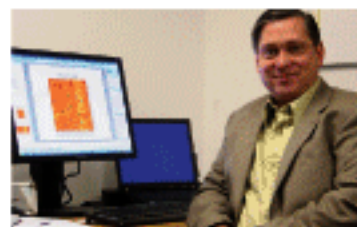


ALS TDF becomes ALS Therapy Development Institute (ALS TDI) following the announcement of a three-year, \$18 million grant from MDA's Augie's Quest.

One-of-a-kind bioinformatics and laboratory management system, "KnowledgeSphere", is built at ALS TDI allowing for seamless data analysis and management of the world's largest drug discovery effort dedicated to treating ALS.



Steve Milne Fund reaches its \$1 million goal. Commits to hitting its next target in half the time.



Steve Perrin, Ph.D., becomes the organization's first chief scientific officer.



GENE *+* LOGIC

ALS TDI completes the first ever comprehensive gene expression database of the SOD1 mouse in partnership with GeneLogic.



ALS TDI purchases a Laser Capture Microdissection (LCM) to investigate cell-specific changes in gene and protein expression.



3rd Annual Leadership Summit fills the room at the Museum of Science in Boston. Drs. Ray Onders, Dale Lange and Hans Kiersted make presentations.



After eight years leading ALS TDI, Jamie steps down as CEO and joins the board.



ALS TDI raises an astonishing \$9,687,302 in 2007 - making the Institute one of the best funded private research organizations in the world focused on a single disease.

For the second year in-a-row, the DOD funds ALS TDI, awarding a \$1 million grant.

2007



Microbix

ALS TDI launches novel gene therapy pipeline and partners with Microbix to develop targeted vectors.



"Yoda" and "Darth," two BioMek automation robots become permanent members of the team at ALS TDI. They are tasked with speeding up the processing of RNA and genotyping.

2008



ALS TDI enters into partnership with Allen Institute for Brain Science. Begins massive *in situ* hybridization experiment.



ALS TDI partners with 6 clinics to collect blood and tissue samples from ALS patients for cross-referencing against gene expression pathways identified in SOD1 database.



Friends for Faye Fund reaches \$1 million in total fundraising.



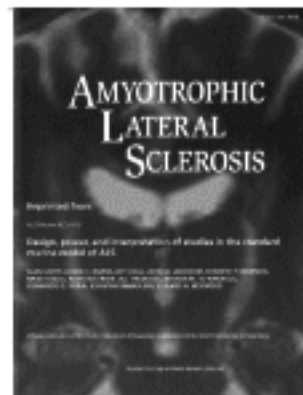
ALS TDI collaborates with California Stem Cell. Work suggests that stem cells can engraft and survive in spinal cord of SOD1 mice. Groups extend collaboration work to develop cell-based drug delivery tools to treat ALS.



TRI-STATE TREK

Tri-State Trek surpasses \$1 million in total fundraising.

SFO Foundation makes \$1.5 million grant.



ALS TDI scientists publish guidelines for researchers using the G93A-SOD1 mouse model of ALS in the journal, *Amyotrophic Lateral Sclerosis*. The paper's title is "Design, Power and Interpretation of Studies in the Standard Murine Model of ALS."

2008

2008



RGK Foundation makes \$1 million, two-year grant to ALS TDI.



US Department of Defense makes \$1.1 million grant to ALS TDI for research.



4th Annual Summit Leadership held at the Holiday Inn at MGH in Boston and features talks from Drs. Sharon Hesterlee, Stanley Appel, Michael Strong, Jean-Pierre Julien and Tom Caltagirone. For the first time ever, the event is broadcast live over the internet, funded by and at the challenge of Jeff Cronon, an ALS patient in Atlanta.



With \$11,022,032 in donations in 2008, ALS TDI continued to grow its capacity, and science team to include more than 30 full-time professional researchers.

PRIZE4LIFE

Prize4Life selects ALS TDI model standards as basis for its \$1 million biomarker and therapeutic prize.

ALS TDI Introductory Webinar:
Responding to the ALS Crisis



ALS TDI begins to hold Monthly Webinars. In its first year, several hundred pALS and cALS join together online each month to receive updates from the lab and ask questions about research and trials.

ALS TDI launches its Ambassador Program, designed to empower pALS and cALS with organization and fundraising skills.

2009



Scientists submit a paper regarding the discovery of ALS TDI 00846 to *Nature Genetics* entitled "From Transcriptome Analysis to Therapeutic Anti-CD40L Treatment in the SOD1 Model of Amyotrophic Lateral Sclerosis."



Asklepios and ALS TDI collaborate on the development of novel adeno-associated viral vectors to be used in drug development research.



Applied Proteomics becomes a strategic partner in ALS TDI's effort to characterize protein expression changes associated with disease onset and progression.



ALS TDI launches a "virtual lab tour" on its website and adds an "Ask a Researcher" button to every web page on its site to provide direct link between patients, families and researchers.



Michael Goldsmith, an ALS TDI Ambassador and ALS Patient, helps to inspire the creation of Major League Baseball's 4uALS Awareness Campaign. A joint effort between Major League Baseball, ALS TDI, MDA's Augie's Quest, the ALS Association and Project A.L.S., culminates in a League-wide awareness initiative on July 4th, 2009; the 70th anniversary of Lou Gehrig's retirement from baseball.

2009

2009



Board Member, Stanley Appel, M.D., tells a Congressional hearing that "ALS is not an incurable disease, it is an underfunded one."



February 6th
– Sean Scott,
president of ALS
TDI, passes away
from ALS.



Based on significant progress made as chief scientific officer, Steve Perrin, Ph.D., is named as the Institutes CEO.



5th Annual Summit is held at the Hotel Marlowe in Cambridge and webcast live over the internet. Presentations were given by Drs. John McCarty, Jude Samulski, Zuoshang Xu and Erika Holzbaur. Steve Perrin makes first public presentation of data on ALS TDI 00846 to peers and ALS community.



ALS TDI redesigns its website, and launched www.als.net in April.



ALS TDI raises \$9,360,831. Bringing the total raised and spent on research to more than \$56 million over the past 10 years.

The Family Funds at ALS TDI

Definition: A dedicated group of people joined together by a shared lineage or ambition to create a world where ALS can be stopped. Usually named in honor of a person diagnosed with ALS.

There are more than 300 of these funds, each playing an important role in driving the research at ALS TDI. The following list recognizes Family Funds that have provided at least \$10,000 over the past 10 years. A complete list, with links to bios and fund activities, is available on our website at www.als.net.

Cumulative Fund Totals as of 12/31/09

	Year Started		Year Started
\$18M+		Margaret Roblin Fund	2008
MDA's Augie's Quest	2007	Jenny Stoddard Family Fund	2003
		Stanfield Family ALS Research Fund	2003
\$6M+		\$100K-\$249K	
Stephen Heywood Family Fund	1999	Jim Airey Fund	2001
\$3M+		Jean Angell Fund	2002
Sean Forrester Scott Fund	2001	Pam Barshack Fund	2005
\$2M+		Blazeman Fund	2005
Chris Hobler / Hope Happens	2001	Rick Bowling Fund	2006
Kozmetsky Family Fund	2003	Brooks Family Foundation	2002
\$1M+		Christy Sloan Fund	2005
Fran Delaney Fund	2001	Jeff Cronon Fund	2007
Friends for Faye Fund	2004	David Dorfman Fund	2001
Mary Lou Krauseneck Fund	2002	Dick Douglass Effort	2001
Stephen Milne Effort	2002	Matt Dowd Fund	2002
Corey Reich Fund	2007	Dunphy Sister's Fund	2002
Tri-State Trek	2005	Larry Ellis Fund	2004
\$500K-\$999K		Steve Fowler Fund	2001
Bruce Edwards/Tom Waston Fund	2003	David Green Fund	2000
DeeDee Fornengo Fund	2002	Mike Justice Fund	2007
Jeff Julian Fund	2003	Kim Family Fund	2000
Anthony Tucker Fund	2000	Phil Kramer Fund	2006
\$250K-\$499K		Chris Martin Fund	2005
ALS Family Charitable Fund	2001	Ken Melanson's Quest for a Cure	2004
Tom Becker Fund	2004	Pittsburgh Families Efforts	2003
Jim Canty Fund	2000	Jim Raspanti Fund	2002
Pam Callahan Fund	2007	Dick Sanderson Fund	2005
Marie Garratt Memorial Fund/Dash for a Cure	2003	Herb Schwartz Fund	2004
Jeff Hadley Fund	2006	Scott Stafne ALS Research Fund	2004
HMS Host Fund	2004	Team Gey	2007
Larry Manes Fund	2000	Ternet Friends Fighting ALS Fund	2003
The James and Alice McGonagle Charitable Trust	2004	Torretta Fund	2004
Jack Orchard Effort	2001	Michael Winston Research Fund	2008
Ride for Life Fund	2000	\$50K-\$99K	
		A Cure is Coming Walk	2005
		Lee Blaskovich Memorial ALS Research Fund	2005
		Rene Bourassa Fund	2005

The Family Funds at ALS TDI continued

	Year Started		Year Started
Edward Brigham Fund	2001	ALS Soccer Cup	2004
Steve Carlin Fund	2001	Ann Arbor Active Against ALS Fund	2008
Paul Gerbick Fund	2002	Robin Arnold Fund	2005
Go To Bed Laughing Fund	2003	Barretti Family Fund	2006
Michael Goldsmith Fund	2009	Big G Fund	2007
Steve Greenspan Fund	2006	Joan Blum Fund	2000
Trude Klugman Fund	2000	Peter Catucci Fund	2009
Rubin Kuznitsky Fund	2004	Lynn Capria Fund	2006
Tom Larsen Challenge	2003	Peter Colichidas Fund	2009
Elliot Macht Fund	2000	Dennis Coogle Fund	2009
Manhattan Fund	2008	Cubby Cronan Fund	2004
Melba Moeck Fund	2005	Donna Dake ALS Research Fund	2004
Roby Molnar Swiss Fund	2004	Eddie Esparza Fund	2007
Jennifer Nichols Fund	2000	Father/Son Fund	2009
Olson Family ALS Research Foundation	2006	Friends of Harry Gianneschi	2002
Orange County Fund	2008	Griffin Family	2006
Parkersburg Area Community Foundation	2008	Hope for Heidi Fund	2009
Payne Family Fund	2006	Jenny Hoff Spokane Family Fund	2007
David Reinstein Fund	2003	Jack Hoffman Fund	2000
Jeff Repetto Fund	2004	Will Hubben ALS Research Fund	2002
Joe Shambo Fund	2004	Nick Huber Fund	2008
Chris Stoikos Fund	2005	Jim Hughes Fund	2006
The Dont Tap Out Fund	2009	Deane Jewell's Team	2003
Westhaven Charities Fund	2007	Walter Knopp Fund	2003
Stephen Yates Fund	2000	Peggy Lanza Fund	2002
		Elaine Leavitt Fund	2005
\$25K-\$49K		Cyndee Luedecking Fund	2006
5430 Sports Fund	2007	Bernie Martinelli Fund	2010
Dean Adraktas Fund	2001	Doug McGuinness Fund	2005
Linda Anton Fund	2005	Scott McWhorter Fund	2008
Neil Brouman Fund	2001	Meadowlark Fund	2007
Brian Byrd Fund	2007	Medved Fund	2007
Cacomo Family Foundation	2005	Meridiths Fight 4 Life	2008
Costa Family Fund	2008	Michael Donnelly Fund	1999
Laughlin Family Fund	2001	Richard M. Mott Effort	2001
Steve Lewis Fund	2002	Myrtle Beach Golf Holiday Fund	2004
Maine West High School Fund	2008	Oakland Activities Association	2009
Jan Monier Fund	2008	Roger Poirier Fund	2001
Northport High School Fund	2007	Ride for Roger	2009
Anita Schein Hecker Fund	2007	Bob Rosencrans Fund	2008
Jim Slovick Fund	2005	Salzarulo Fund	2009
Ellen Sutherland Fund	2005	Paul Sundman Fund	2007
The Carter Family ALS Fund	2003	Carl Tanner Fund	2004
Tow Family Fund	2003	Teach to Fight ALS	2004
Jeff Ureel Fund	2002	Team Virden	2007
Steve Weekes Fund	2005	Team Sheila	2008
		Its Just Lunch Fund	2007
\$10K-\$25K		Matt White Fund	2008
Bryan & Mark Allain Fund	2002	Wolfmom Family Fund	2002
ALS Hope San Diego Fund	2009		



THE LEADERSHIP GIVING
Circle
ACCELERATE RESEARCH

Calendar Year 2009

Research Champion (\$25,000+)

Name	Fund
Department of the Army Insource Services, Inc. Javier Burillo	Corey Reich Fund
Maine Township High School Major League Baseball Charities Inc Muscular Dystrophy Association Theodore and Wendy Reich	MDA's Augie's Quest Corey Reich Fund
RGK Foundation Ron Russ Sierra Pacific Foundation Chris Stoikos Memorial Taylor Farms Pacific Inc The James and Alice McGonagle Charitable Fund	Corey Reich Fund Chris Stoikos Fund Corey Reich Fund
Total Tec Systems, Inc. Westphal Family Foundation	Fran Delaney Fund Corey Reich Fund

Research Visionary (\$10,000+)

Name	Fund
Ann Arbor Active Against ALS ALS Family Charitable Foundation Inc Caccomo Family Foundation Core Network LLC Frank and Judy Creamer Brit d'Arbeloff Fran Delaney Foundation Carol Ann Garratt In Re Erie Family Life Settlement Fund Adelard A. and Valeda Lea Roy Foundation Don and Toni Loback Herbert and Suzanne Lynskey Nokia Inc Olson ALS Foundation INC Melanie Pasiias Doug and Ellen Reich Dawn Sanderson JoEllen Shea The Jeff Julian ALS Foundation The Overaa Family Group The Tinsley Group Inc The Thorson Foundation Westhaven Charities Inc Woodbine Bend Golf Course	ALS Family Charitable Fund Rick Bowling Fund Stephen Heywood Fund Fran Delaney Fund Marie Garratt Memorial Fund Friends for Faye Fund Stanfield Family ALS Research Fund Phil Kramer Fund Corey Reich Fund Dick Sanderson ALS TDI Golf Corey Reich Fund HMS Host Fund ALS TDI Golf Jenny Stoddard Fund

Research Steward (\$5000+)

Name	Fund
A Midwinter Night Dream ALS Benefit Account David A. Antal D-B-A The Big G Foundation ASD Foundation Atlanta Circulation Steven Bauersachs David and Janie Berg Dennis and Patricia-Ann Bourassa Bronx-Lebanon Hospital Center Edward Bucciarelli Robert and Alice Butler Family Charitable Founda Peter Colichidas	Anthony Tucker Fund HMS Host Fund Linda Bauersachs Fund Michael Winston Research Fund Bourassa Fund Corey Reich Fund Corey Reich Fund Corey Reich Fund Jennifer Nichols Peter Colichidas Fund

The Leadership Giving Circle includes all individual donors that have provided significant financial support to ALS TDI in the previous calendar year. Each member is recognized here in the 2009 Annual Report, at our annual Leadership Summit and on our website.

Research Steward (\$5000+) continued

Name	Fund
Stephen and Bernadette Cooper CT Friends for ALS Research Dalio Family Foundation INC Salvi and Karen Dellabarca Carolyn Dietz Charles and Robin Ebert Amy Goldberg Peter John Garratt Karen Gordon Mr and Mrs Wynne Gulden Jr Kally and Jody Hearron James Hebert Help America Foundation Jennifer Huntington Johnson & Johnson Ben Joyce Jamie and Gail Keatin Beth Kempf Mickey Kieffer Life Threatening Illness Charity of America Mark Magliocchetti	Mary Lou Krauseneck Corey Reich Fund Corey Reich Fund Charles Ebert Fund Regina Schreiber Fund Marie Garratt Memorial Fund Michael Winston Research Fund Tim Shellenberger Memorial Fund Corey Reich Fund Stephen Heywood Fund Corey Reich Fund Corey Reich Fund Friends for Faye Fund Michael Winston Research Fund 4♣ALS Major League Baseball New England Fund Corey Reich Fund Ken Melanson Fund Pam Callahan Fund HMS Host Fund HMS Host Fund Michael Winston Research Fund Corey Reich Fund HMS Host Fund Corey Reich Fund Corey Reich Fund Corey Reich Fund Friends for Faye Fund Mary Lou Krauseneck Corey Reich Fund Stephen Heywood Fund Corey Reich Fund Mary Lou Krauseneck Corey Reich Fund
Markstein Foundation Keith and Jill Melanson Oakland Activities Association Greg and Hanna Ostoff Lauren Pariseau Pepin Distributing Compagny Pfizer Foundation Matching Gift Program Michael Pierce Proteus Design Ken Rawlings Raynier Institute & Foundation Reynolds Smith and Hills Inc. John and Mary Ricksen Larry and Susan Ricksen Richard and Nancy Robinson Rosy S. Golf Outing David and Mitzi Sabato John and Iola Sobeck Taylor Family Investments LLC. Jay Tenenbaum The MBK Foundation The Stella Matutina O'Connor Foundation Daniel and Theresa Walner	

Research Advocate (\$2500+)

Name	Fund
Alpha Baking Company ALSSO Benjamin Ahles Darin De Angeli Aquesta Bank Mark Bello Ruthann Brazil Frederic and Marie Carter Charitable Gift Fund Darryl Christner Mary Cirafice	Jenny Hoff Fund Corey Reich Fund Dennis Coogle Fund Oakland Activities Association Corey Reich Fund Corey Reich Fund ALS TDI Stanfield Family ALS Research Fund HMS Host Fund

Research Advocate (\$2500+) continued

Name	Fund
Citrus World Inc	HMS Host Fund
Neil Clark	
R Conner	Corey Reich Fund
Guy DeRosa	
Randy Craft	Corey Reich Fund
Diageo North America Inc.	LS TDI Golf
Jack and Sheila Doyle	Dick Douglass Effort
Kirk Dulany	Bob Beshara Fund
David and Anna Elefant	Corey Reich Fund
M.D. and Marisa Emerson	Corey Reich Fund
First Baptist Church of Mayodan NC	Devona Sands Fund Memorial
Joe Florenzano	Michael Winston Research Fund
Carol Foy	Marie Garratt Memorial Fund
Todd & Judy Freeman	Michael Winston Research Fund
Sbarro Franchise	HMS Host Fund
Garner Environmental Services	Stanfield Family ALS Research Fund
Julie Graves	
Jim Heeter	David Deitch Fund
HMS Host	
Jean Inman	
John R. Lyman Company	Phil Kramer Fund
Phil and Lisa Johnstone	Anthony Tucker Fund
Sonia Kashuk	Hope for Heidi
Kevin Keane	Michael Winston Research Fund
Kents Hill School	Dallas ALS Fund
Jody Kevett	
Anthony & Randee Killeen	HMS Host Fund
Konica Minolta Business Solutions U.S.A. Inc	Michael Winston Research Fund
Dave Lafferty	Rick Bowling Fund
Patricia Laus	HMS Host Fund
Steven Lear	Pam Callahan Fund
James Lee	Michael Winston Research Fund
Patricia Lee	Dallas ALS Fund
Lipsitz Green Scime Cambria	Corey Reich Fund
Little Dog Publications	Margaret Roblin Fund
Jo Anne Lopatin	
Paulette Mariano	Friends for Faye Fund
Travis McKibbin	Corey Reich Fund
Morgan Stanley Foundation	Dallas ALS Fund
Motts Llp	Misc. FFC Events
Kevin Mullen	HMS Host Fund
McCain Foods USA Inc	Michael Winston Research Fund
Nicks Tomatoe Pie	HMS Host Fund
Paul Nugent	HMS Host Fund
George Oconnell	Corey Reich Fund
Odwalla	HMS Host Fund
John Onstott	HMS Host Fund
Margaret Paroski	Margaret Roblin Fund
PatientsLikeMe Inc.	
Richard Portewig	Corey Reich Fund
Susan Powell	HMS Host Fund
Garret Reed	HMS Host Fund
Radiology INC Foundation	Friends for Faye Fund
Rudolph and Laurie Reich	Corey Reich Fund
Tom and Brigitte Reich	Corey Reich Fund
Pernod Ricard	HMS Host Fund
Sarah Romanow	Corey Reich Fund
Mike and Kristen Rone	Michael Winston Research Fund
Samuel & Rachel Rosen	Michael Winston Research Fund
Roura and Melamed Attorney's at Law	
Ronald Sacco	ALS TDI Golf
Chelsea Shaw	HMS Host Fund
Brian and Janine Stanfield	Stanfield Family ALS Research Fund
Michael Stern	Michael Winston Research Fund
Alain Sunier	Corey Reich Fund
The Delta Interests LLC	Corey Reich Fund
Bratten Thomason	Christy Sloan Fund
Try It Distributing Co.	Christy Sloan Fund
University of Pittsburgh Medical Center	Margaret Roblin Fund
Us Foodservice	
USA Roofing	
Warner Bros. Entertainment Inc	Dallas ALS Fund
Frederick and Elizabeth Weaver	Steve Greenspan Fund
Westin Hotels And Resorts	Marie Garratt Memorial Fund
Jeffrey and Mona Winston	
Valero Energy Foundation	Michael Winston Research Fund
Jeff Vernier	
Michael Zinovoy	Dallas ALS Fund
	HMS Host Fund

Research Sponsor (\$1000+)

Name	Fund
A Small Miracle Inc	Don Koenig Fund
Paul and Janet Abramson	Lee Abramson-Ace Noface Fund
ACN Inc	Dennis Coogle Fund
Stuart Adelman	Michael Winston Research Fund
Edward Ahrens	Corey Reich Fund
Denise Allen	Corey Reich Fund
Alexander Aronson Finning & CO	
Amboy	
American Beverage Marketers	HMS Host Fund
Amparo Garcia-Capelo	
Michael and Jean Artin	
Association Management Inc	Stephen Heywood Fund
Thomas and Mary Austin	Marie Garratt Memorial Fund
Alissa Bachner	ALS TDI Golf
Bailey Law Group	Corey Reich Fund
Patricia Bailey	HMS Host Fund
Balasa Dinverno and Foltz LLC	Northeast Fund
Steve and Wendy Baldinger	Friends for Faye Fund
Bank of America Matching Gifts Program	Michael Winston Research Fund
Bank Of America Merrill Lynch	Jeff Cronon Fund
Brett and Patricia Barakett Foundation	
John and Michelle Barrie	Ride for Roger
Barretti Family	Corey Reich Fund
Paul Benenson	Barretti Family Fund
Steven Berger and Paula Hughmanick	Michael Winston Research Fund
Russell Berndt	Corey Reich Fund
Terry Blete	Phil Kramer Fund
Christine and Sim Bohar	Corey Reich Fund
James and Debra Bomberg	Corey Reich Fund
Bomberg, Roach and Hanson	Michael Winston Research Fund
Bonita Bay Club	Michael Winston Research Fund
Boston Valley Terra Cotta	ALS TDI Golf
Ross Bowen	
John and Amy Bowles Lawrence Foundation	
Raymond Bowman	Marie Garratt Memorial Fund
Karl Brand	Pam Callahan Fund
Brightpoint North America	Phil Kramer Fund
Richard Brodtkin and Lois Buerkle Brodtkin	Team Gey
Alexander Bromley	
Brookfield Kiwanis Club	Steve Carpenter Fund
Christopher Brown	Jeff Hadley Fund
Burkhart Advertising Inc	Friends for Faye Fund
Steve Byrd	Brian Byrd Fund
Kevin and Cindi Callahan	Corey Reich Fund
Thomas Callahan	
Martin and Esther Capp of The Saint Paul Foundation	Michael Winston Research Fund
Ana Casals	Stanfield Family ALS Research Fund
Ryan Choi	Corey Reich Fund
Dean and Suzanne Christensen	
Carol Christensen	Margaret Roblin Fund
Kabir Chuttani	Marie Garratt Memorial Fund
Clark County Association of Health Underwriters	David Deitch Fund
Robert Clausen	Friends for Faye Fund
John Clippinger	
Barabara Cohen	Corey Reich Fund
Drs Coleman & Muldoon	Dennis Coogle Fund
William Collier III	
Copeland Construction	Meridiths Fight 4 Life Fund
Robert Cox	
David Coye	David Green Fund
Raymond M and Jane E Cracchiolo Foundation	Mary Lou Krauseneck Fund
Sand Creek	Rubin Kuznitsky Fund
Crown Imports	
CSJM Architects Incorporated	HMS Host Fund
Daniel Dalye	
Dan Berry Insurance Agency Inc.	Friends for Faye Fund
George Danko	Michael Winston Research Fund
Kathleen Davis	ALS TDI Golf
Robert Dejoy	Corey Reich Fund
Dell Direct Giving Campaign	
Kevin and Cathy DiLorenzo	Michael Winston Research Fund
Liliana Dimitri	ALS TDI Golf
Disney Worlwide Outreach	Peter Catucci Fund
Ralph and Barbara Dobson	Friends for Faye Fund
Stephen and Pam Douglass	Dick Douglass Effort
Robert and Vivian Donato	
Nancy Dowd	Matt Dowd Fund
Rock Doyle	Margaret Roblin Fund

Research Sponsor (\$1000+) continued

Name	Fund
Pat and Jenny Dwyer ECF Employee Christmas Fund Endo Pharmaceuticals Eric Engdahl Erie County Medical Center Edith Fenton William Faradie Stephen Ferretti Edouard De La Tour D'Auvergne Michael Farrell Robert Fink FJMCD LLC Bob Flinn David Fonvielle Robert and Dorothy Frassetto Alex Freda Roger and Beverly Freeman Teak and Karen Freshour Glen and Robin Funjinaka Richard Garratt and Laurel Buccola Garratt GE Foundation Steve and Lisa Gerber Richard Giffith Cheryl Gilbert Esther Gillman Steve Gilmour Joseph Gimilaro Wayne Gimlin Lou and Celia Star Gody Jane Gomprecht Kathleen Gomprecht Goodrich Foundation Grace Episcopal Church Newton Alison Greenspan Ann Greenspan Groupe le Duff Amerique Societe en Commandite Frank Hable Bruce Hain Seung Sook Han Eryn Harrison Scott Harshman Christopher and Anja Hart Terri Hathaway Brad Heckenkemper James Hettrick Benjamin Heywood James Allen Heywood John and Peggy Heywood Marguerite Heywood Donald Hilburn Cynthia Hill Kent Hill HMS Host Invitational Hodgson Russ LLP David Holl Gordon Holmes Jo-Ann Hornyak Mark Howerton HP Company Foundation HSBC Philanthropic Programs Imiagency Indiana State Seniors Golf Assoc Innovative Concept Group Inc Spiros Jamas Jennie O Turkey Store Inc Bill Jennings Mark and Patricia Jennings Walt Jennings Violet Jones-Medusky Mark Judd Ronald and Judy Kaecker Kaleida Health Marybeth Kavanagh Thomas Keating Ken S Foods Inc James King Tom King	Facebook West Team Shelia Margaret Roblin Fund Stephen Heywood Fund McDaid Fund Herb Schwartz Fund Corey Reich Fund Friends for Faye Fund Corey Reich Fund Team Gey Corey Reich Fund Corey Reich Fund Mary Lou Krauseneck Corey Reich Fund Marie Garratt Memorial Fund Friends for Faye Fund Corey Reich Fund HMS Host Fund Michael Winston Research Fund Corey Reich Fund Peter Catucci Fund Dallas ALS Fund Wolfmom Family Fund Corey Reich Fund Corey Reich Fund Stephen Heywood Fund Steve Greenspan Fund Steve Greenspan Fund HMS Host Fund Unsolicited Stephen Heywood Fund Corey Reich Fund Corey Reich Fund Corey Reich Fund Stanfield Family ALS Research Fund Stanfield Family ALS Research Fund Margaret Roblin Fund Stephen Heywood Fund Stephen Heywood Fund Stephen Heywood Fund Stephen Heywood Fund Unsolicited Dick Sanderson ALS TDI Golf Margaret Roblin Fund Dallas ALS Fund Ron Warren Fund HMS Host Fund ALS TDI Golf HMS Host Fund Stephen Heywood Fund HMS Host Fund Phil Kramer Fund Phil Kramer Fund Phil Kramer Fund 4♦ALS Major League Baseball West Margaret Roblin Fund Jan Monier Fund Margaret Roblin Fund Marie Garratt Memorial Fund Corey Reich Fund HMS Host Fund The 2130 New York

Research Sponsor (\$1000+) continued

Name	Fund
Kirkland & Ellis Foundation Stuart and Anne Knowles Gary Kokin Michael Krikoian Rubin Kuznitsky Edgard and Florence Leslie Charitable Trust Leighton Oare Foundation Bob and Mary Leisure Rosa Lee de Leuze Dino Leva Edward Levy Liberty KiA Mary Liebman James Lilly Mark Lilly Lippes Mathias Wexler Gerald Lippes Lower Falls Wine Company Sue Lund Steve and Cynde Lundgren Theodore Lustin Lyndon Haviland Company M Medved Co Inc Cathy Magill Sharon Makowsky Natalie Mallinckrodt Mark Mandeville Marcus Realty Peter Mark and Lynn Goldsmith Markstein Beverage Co Dan and Cristin Marposon Martin Family Trust Scott Matula Memorial Home Care Merrill Lynch Trust Company Meuse Family Foundation Meyers Printing J.N and C.A. McConell Sandra McCoy James McKibbin Barbara McMillan Roderick McRae Michiana Hermtology Oncology Mile High United Way Arthur Miller Robins Kaplan Miller & Ciresi John and Kathryn Milligan Minervino Limited Partnership Chris and Deborah Minervino Francisco and Karin Montoya Christopher Moore Edward and Barbara Morgan Joshua Morgan Murad Auctions Pamela Murphy Jack and Zelig Myers Catherine Nathan Nephrology Inc New Jersey State Troopers New York Breeders' Sales Co Inc Lenny & Terry Newman JuAnne Ng Gregory Norwood Michael Nugent Martin O'Connor Ogletree, Deakins, Nash, Smoak & Stewart, PC Jonathan Orloff Reed Oslan Aldo and Sandra Papone Hugo Paredes Scott Parkenson Betty A Payne Michael Pennington Phoenix Rehabilitation & Health John Perry Piedmont High School Boosters Scott Plank and Dana DiCarlo Plank	Charles Hackney Fund Corey Reich Fund Margaret Roblin Fund Pam Callahan Fund Ruben Kuznitsky Fund Anthony Tucker Fund Friends for Faye Fund Mary Lou Krauseneck Corey Reich Fund Friends for Faye Fund Jenny Stoddard Fund Corey Reich Fund Anthony Tucker Fund Margaret Roblin Fund Margaret Roblin Fund Minervino Family Fund Michael Winston Research Fund Corey Reich Fund Sean Forrester Scott Fund Steve Carpenter Fund Michael Winston Research Fund Corey Reich Fund Stanfield Family ALS Research Fund Friends for Faye Fund Michael Goldsmith Fund Corey Reich Fund Salzarulo Fund ALS TDI Golf Margaret Cullen Fund Friends for Faye Fund Michael Winston Research Fun Marie Garratt Memorial Fund Marie Garratt Memorial Fund Dallas ALS Fund Michael Winston Research Fund ALS TDI Golf Medved Fund Marie Garratt Memorial Fund Michael Winston Research Fund ALS TDI Golf John Wake Fund Corey Reich Fund Dallas ALS Fund Corey Reich Fund Friends for Faye Fund Michael Winston Research Fund Dennis Coogle Fund Corey Reich Fund Mary Lou Krauseneck Herb Schwartz Fund Charles Hackney Fund Herb Schwartz Fund Christy Sloan Fund Payne Family Fund Phil Kramer Fund Meridiths Fight 4 Life Fund Corey Reich Fund



Research Sponsor (\$1000+) continued

Name	Fund
Jeanette Pollion	Stephen Heywood Fund
Lee Poquette	HMS Host Fund
William and Sandra Porter	Stanfield Family ALS Research Fund
Jacquelin Portewig	Corey Reich Fund
Colby and Julia Powell	
Premier Breaverage Compagny LLC	HMS Host Fund
Aric Press	Michael Goldsmith Fund
Pulmonary & Critical Care Assoc., PC	Friends for Faye Fund
Natalie Ramier	Michael Winston Research Fund
Rampart Casino	David Deitch Fund
Ryan Randall	
Rhonda Real	Dallas ALS Fund
Regina Rear Connor	Dunphy Sisters' Fund
R.E.E. Consulting, LLC	
Red Letter Holdings	Dennis Coogle Fund
John Redden Memorial	
Stephen Reich	Corey Reich Fund
Reichert Foundation	ALS TDI Golf
Jean Relyea	Salzarulo Fund
Kenneth Renko	HMS Host Fund
Daniel Richenthal	
Sandra Riffe	Dallas ALS Fund
Risser Endodontics PC	Friends for Faye Fund
Tom Ritchie	Stanfield Family ALS Research Fund
Gerald Robbins	
Paul Rockar	Rick Bowling Fund
Robert Rodin	Sean Forrester Scott Fund
Neil Rothenberg	Corey Reich Fund
Richard Rosenfeld	
Matthew and Cathy Rosing	Marie Garratt Memorial Fund
Jim Rossi	Team Gey Fund
Ann Rouse	
Ruth Anne Rubenstein	
Mike and Geri Rubenstein	
Rudder Restaurant Attaya-Boland	
Robert Sadlemire and Mary Kay Boudewyns	Jeff Hadley Fund
Santa Fe Community Foundation	
Carmine Sarno	Corey Reich Fund
Thomas Seiffert and Faye Magnuson	Friends for Faye Fund
Sca Tissue North America	HMS Host Fund
Steven & Nancy Schachtman	Michael Winston Research Fund
Bob and Cynthia Schuneman	Stephen Heywood
Schwab Charitable Fund	
Michael Sedlak	Corey Reich Fund
John Shutack	
Silver Shield Association	Ride for Roger
Alvin Siteman	Friends for Faye Fund
Sitzmann, Morris and Lavis	Corey Reich Fund
Alicia Skodol	Lee Blaskovich Fund
Jacklyn Smith	Michael Winston Research Fund
Michael & Shelli Smith	Michael Winston Research Fund
Molly Smith	Steve Greenspan Fund
Paul Smith	HMS Host Fund
Irene Snow	Margaret Roblin Fund
Steve and Anne Sommer	Corey Reich Fund
South Bend Warehouse and Distribution Corporation	Friends for Faye Fund
Micheal Spieth	Marie Garratt Memorial Fund
Joe Spoo	Scott Stafne ALS Research Fund
Sports Auctions For Charity	
Richard and Janet Srague	Stephen Heywood Fund
St Philip The Apostle Catholic Church	
David Staley	Corey Reich Fund
Shane Stark	Dan Dowson Dobber Up
Startifacts	Michael Winston Research Fund
Robert and Sonya Stevanovki	
Craig Steward	
Lorrie Stonacek	4+ALS Awareness
Christian Storm	Corey Reich Fund
Beth Strackell	Dallas ALS Fund
John Sullivan	
Sun'n Fun Fly-in Inc.	Marie Garratt Memorial Fund
Suntrust Foundation	Peter Catucci Fund
T.A.S. Environmental Services	
Linda Tatu	Margaret Roblin Fund
Michael and Judith Tavill	Pam Callahan Fund
Tracy Taylor	Phil Kramer Fund

Research Sponsor (\$1000+) continued

Name	Fund
The ADCO Group	Corey Reich Fund
The Bean Counter	
The Great American Bagel Enterprises Inc	
The Law Offices of Fischer Garon Hoyumpa & Rancilio	Mary Lou Krauseneck Fund
The Lobster Shack at Two Light	
The Wanderers Club	
The Wasserstrom Company	HMS Host Fund
The Wigand Family	
Chris and Anne Thorsen	Corey Reich Fund
David Thysen and Beverly Rees	
Russell and Christine Tippet	Jenny Stoddard Fund
Trump National Golf Club	
UBS Financial Services	
University at Buffalo Neurosurgery	Margaret Roblin Fund
Fyllis Unowsky	Michael Winston Research Fund
Utah Society for Respiratory Care	
Vanguard Charitable Endowment Program	
John Vazzana	Manhattan Fund
Rene Vergez	ALS TDI Golf
Christine Virden	Team Virden
James Voyles	ALS TDI Golf
Michael Wachtell	Marcia Wachtell Fund
Michael Wallace	Phil Kramer Fund
Robert and Joan Wallace	
Bryan Walsh	Phil Kramer Fund
Wellesley College	
Mike Weston	The 2130 New York
Tim Whelan	HMS Host Fund
Eric and Amy Whipple	Mary Lou Krauseneck
Dorothy Wiekamp	Friends for Faye Fund
Bethany Williams	
Peter and Ellen Wilson	Corey Reich Fund
Robert and Loretta Wolf	ALS TDI Golf Challenge
Frank J. Wood	
Samuel Woodworth	ALS TDI Golf
Brian Wruble	Stephen Heywood Fund
Linda Yahner	
Yogurt Ventures USA Inc	HMS Host Fund
ZD Wines	Corey Reich Fund
Michael Zibby	Lee Blaskovich Fund

ALS TDI has become one of the world foremost innovators in research and development of potential treatments for ALS. We still believe that a treatment for ALS is not only possible, but inevitable.

2009: ALS TDI 00846 IDENTIFIED, INSTITUTE BEGINS PARTNERING PROCESS

For the fiscal year ending December 31, 2009, ALS TDI recognized more than \$9.3 million in public support and unrestricted revenue. **OVER THE PAST TEN YEARS, ALS TDI HAS RAISED MORE THAN \$60 MILLION FOR RESEARCH, 1/3 OF WHICH HAS BEEN DONATED IN THE LAST TWO YEARS ALONE.** In 2009, nearly two hundred fundraising events took place in support of our research, buoyed by nearly one hundred July 4th BBQ events held in partnership with Major League Baseball 4 ALS Awareness Program. A full-break down of our assets, liabilities, revenue and expenses is below.

Assets

Unrestricted Assets

Cash	3,829,175
Investments	2,107
Accounts and Pledges	115
Prepaid Exp.	73,944
Fixed	607,790
Other	41,167

Restricted Assets

Temporary	375,000
-----------	---------

Total EOY Net Assets \$4,929,298

Liabilities & Net Assets

Total Liabilities	(661,641)
Total EOY Net Assets	4,929,298

Total Liabilities & Net Assets \$4,267,657

Public Support

Grants	7,377,500
Special	1,411,263
General	249,949
Donated	273,518
Interest	48,591

Net Public \$9,360,821

Expenses

Program

R&D	
Science	2,613,109
Lab	2,291,975
Informatics	291,657
Patient Services	441,290
Clinical	23,035
Communications	892,480
BD	234,000

Total Program \$6,787,546

Support

General	795,525
Fundraising	685,821

Total Support \$1,481,346

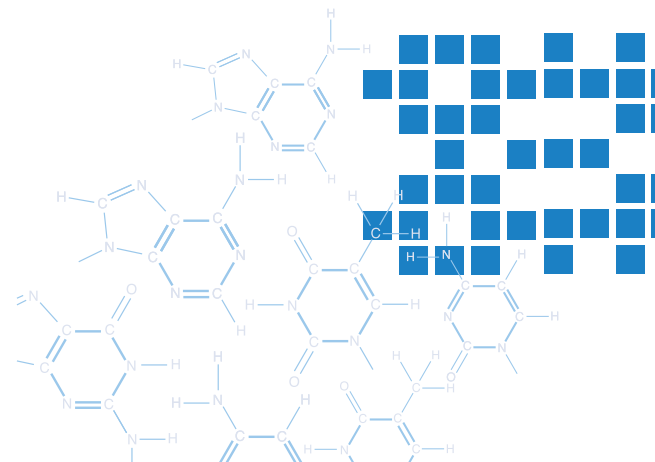
Total Expenses \$8,268,892

20,000 DONATIONS, 300 FAMILY FUNDS, 200 GRASSROOTS EVENTS – 1 GOAL

While 2009 may have been one of the most challenging fundraising years for many organizations, ALSTDI held strong thanks to the commitment and determination of the ALS community to fund their own brick-and-mortar research institute. **MORE THAN 300 FAMILY FUNDS FUEL OUR RESEARCH. THEIR COMBINED EFFORTS LED TO NEARLY 20,000 INDIVIDUAL DONATIONS IN 2009.**

The graph below depicts the total spending and percentage of total expenses for the various categories reported on each year. The Institute's finances are in a strong position with reserves at their highest point since the foundation was created, allowing for long-term and strategic investments and planning to advance more potential therapeutics from the lab bench to the bedside quicker than ever before. **THIS KEY ADDITIONAL FUNDING WILL ENABLE MORE NOVEL THERAPEUTIC CANDIDATES TO MOVE FROM THE PRECLINICAL PIPELINE INTO THE PARTNERING AND CLINICAL TRIAL PHASES OF DEVELOPMENT.**

<u>Expenses</u>		2009	
<u>Program</u>	<u>Amount</u>	<u>Ratio</u>	
R&D			
<i>Science</i>	2,613,109	31.60%	
<i>Lab</i>	2,291,975	27.72%	
<i>Informatics</i>	291,657	3.53%	
<i>Patient Services</i>	441,290	5.34%	
<i>Clinical</i>	23,035	0.28%	
<i>Communications</i>	892,480	10.79%	
<i>BD</i>	234,000	2.83%	
<u>Total Program</u>	<u>\$6,787,546</u>	<u>82.09%</u>	
<u>Support</u>			
<i>General</i>	795,525	9.62%	
<i>Fundraising</i>	685,821	8.29%	
<u>Total Support</u>	<u>\$1,481,346</u>	<u>17.91%</u>	
<u>Total Expenses</u>	<u>\$8,268,892</u>	<u>100.00%</u>	







215 First Street, Cambridge, Massachusetts 02142

TEL: 617.441.7200 FAX: 617.441.7299

EMAIL: info@als.net WEB: www.als.net